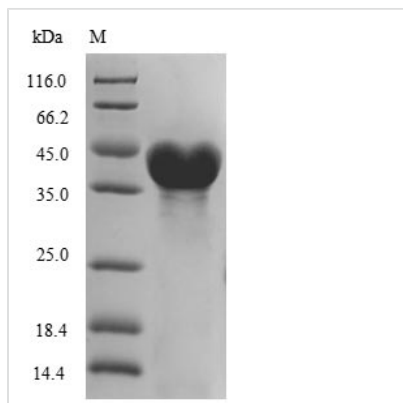




Recombinant *Colwellia psychrerythraea* DNA ligase (ligA), partial

Product Code	CSB-EP669648CBAB
Relevance	DNA ligase that catalyzes the formation of phosphodiester linkages between 5'-phosphoryl and 3'-hydroxyl groups in double-stranded DNA using NAD as a coenzyme and as the energy source for the reaction. It is essential for DNA replication and repair of damaged DNA.
Abbreviation	Recombinant <i>Colwellia psychrerythraea</i> ligA protein, partial
Storage	The shelf life is related to many factors, storage state, buffer ingredients, storage temperature and the stability of the protein itself. Generally, the shelf life of liquid form is 6 months at -20°C/-80°C. The shelf life of lyophilized form is 12 months at -20°C/-80°C.
Uniprot No.	Q47YI0
Product Type	Recombinant Protein
Immunogen Species	<i>Colwellia psychrerythraea</i> (strain 34H / ATCC BAA-681) (<i>Vibrio psychroerythus</i>)
Purity	≥ 85% as determined by SDS-PAGE.
Sequence	KFPAEEELTCVEDVEFQVGRGTGAITPVARLKPVFVGGVTVSNATLHNQDEITRL GLKVNDFFVIRRAGDVIPQIVSVVLDKRPDNAVDFPTSCPVCDSAVAKPEGE AVLRCTAGLFCAAQRKEAIKHFASRKAHDVDGLGDKLVEQLVDEKLINTPADLF KLTEIQVSTIDRMGKKSATNLINGLEQAKSTTLAKFIYGLGIREVGEATAANLAN HFYTLAAIESASLEDLQNVSDVGEVVAKNIINFFKEEHNLAIVSGLSEVMHWPTI EIKSAEELPLAEQIFVLTGTLTQMGRTEAKTALQSLGAKVSGSVSKNTHFVVAG DKAGSKLTKAQLGISVLTEDGLVALLAEHGITI
Research Area	Epigenetics and Nuclear Signaling
Source	<i>E.coli</i>
Target Names	ligA
Protein Names	Polydeoxyribonucleotide synthase [NAD(+)]
Expression Region	330-689aa
Notes	Repeated freezing and thawing is not recommended. Store working aliquots at 4°C for up to one week.
Tag Info	N-terminal 10xHis-tagged
Mol. Weight	42.1 kDa
Protein Length	Partial
Image	



(Tris-Glycine gel) Discontinuous SDS-PAGE (reduced) with 5% enrichment gel and 15% separation gel.

Reconstitution

We recommend that this vial be briefly centrifuged prior to opening to bring the contents to the bottom. Please reconstitute protein in deionized sterile water to a concentration of 0.1-1.0 mg/mL. We recommend to add 5-50% of glycerol (final concentration) and aliquot for long-term storage at -20°C/-80°C. Our default final concentration of glycerol is 50%. Customers could use it as reference.

Shelf Life

The shelf life is related to many factors, storage state, buffer ingredients, storage temperature and the stability of the protein itself. Generally, the shelf life of liquid form is 6 months at -20°C/-80°C. The shelf life of lyophilized form is 12 months at -20°C/-80°C.