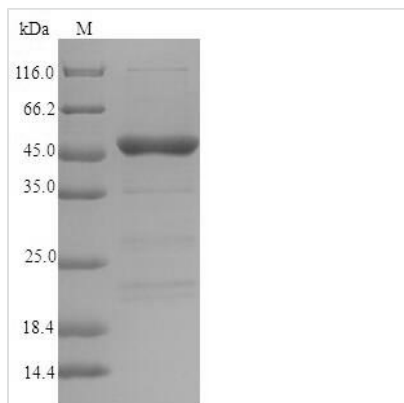




# Recombinant Lolium perenne Major pollen allergen Lol p 5a (LOLPIB)

<b>Product Code</b>	CSB-EP670318LQK
<b>Abbreviation</b>	Recombinant Lolium perenne LOLPIB protein
<b>Storage</b>	The shelf life is related to many factors, storage state, buffer ingredients, storage temperature and the stability of the protein itself. Generally, the shelf life of liquid form is 6 months at -20°C/-80°C. The shelf life of lyophilized form is 12 months at -20°C/-80°C.
<b>Uniprot No.</b>	Q40240
<b>Alias</b>	Allergen Lol p 1b Allergen Lol p Va Allergen: Lol p 5a
<b>Product Type</b>	Recombinant Protein
<b>Immunogen Species</b>	Lolium perenne (Perennial ryegrass)
<b>Purity</b>	Greater than 90% as determined by SDS-PAGE.
<b>Sequence</b>	ADAGYTPAAAATPATPAATPAAAGGKATTDEQKLLLEDVNAGFKA AVAAAAANAP PADKFKIFEAAFSESSKGLLATSAAKAPGLIPKLDTAYDVAYKAAEATPEAKYDA FVTALTEALRVIAGALEVHAVKPATEEVLAAKIPTGELQIVDKIDAAFKIAATAAN AAPTNDKFTVFESAFNKALNECTGGAYETYKFI PSLEAAVKQAYAATVAAAPEV KYAVFEAALTKAITAMTQAQKAGKPAAAAATAAATVATAAATAAAVLPPPLL VV QSLISLLIYY
<b>Research Area</b>	Allergen
<b>Source</b>	E.coli
<b>Target Names</b>	LOLPIB
<b>Protein Names</b>	Recommended name: Major pollen allergen Lol p 5a Alternative name(s): Allergen Lol p 1b Allergen Lol p Va Allergen= Lol p 5a
<b>Expression Region</b>	26-307aa
<b>Notes</b>	Repeated freezing and thawing is not recommended. Store working aliquots at 4°C for up to one week.
<b>Tag Info</b>	N-terminal 10xHis-SUMO-tagged and C-terminal Myc-tagged
<b>Mol. Weight</b>	48.4kDa
<b>Protein Length</b>	Full Length of Mature Protein
<b>Image</b>	



(Tris-Glycine gel) Discontinuous SDS-PAGE (reduced) with 5% enrichment gel and 15% separation gel.

### Reconstitution

We recommend that this vial be briefly centrifuged prior to opening to bring the contents to the bottom. Please reconstitute protein in deionized sterile water to a concentration of 0.1-1.0 mg/mL. We recommend to add 5-50% of glycerol (final concentration) and aliquot for long-term storage at -20°C/-80°C. Our default final concentration of glycerol is 50%. Customers could use it as reference.

### Shelf Life

The shelf life is related to many factors, storage state, buffer ingredients, storage temperature and the stability of the protein itself. Generally, the shelf life of liquid form is 6 months at -20°C/-80°C. The shelf life of lyophilized form is 12 months at -20°C/-80°C.