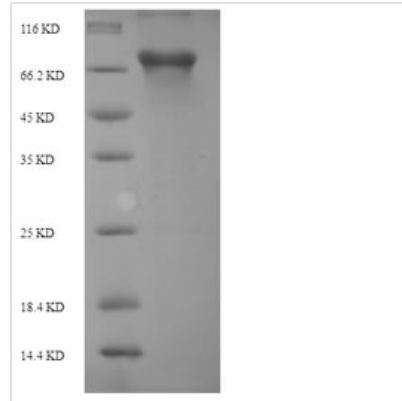




# Recombinant Rat Putative phospholipase B-like 2 (Plbd2)

<b>Product Code</b>	CSB-EP683927RA
<b>Relevance</b>	Putative phospholipase.
<b>Abbreviation</b>	Recombinant Rat Plbd2 protein
<b>Storage</b>	The shelf life is related to many factors, storage state, buffer ingredients, storage temperature and the stability of the protein itself. Generally, the shelf life of liquid form is 6 months at -20°C/-80°C. The shelf life of lyophilized form is 12 months at -20°C/-80°C.
<b>Uniprot No.</b>	Q4QQW8
<b>Alias</b>	LAMA-like protein 2; Lamina ancestor homolog 2; Phospholipase B domain-containing protein 2
<b>Product Type</b>	Recombinant Protein
<b>Immunogen Species</b>	Rattus norvegicus (Rat)
<b>Purity</b>	≥ 90% as determined by SDS-PAGE.
<b>Sequence</b>	GALPTLGGWRRQNPEPPASRTRSLLLDAASGQLRLEYGFHPDAVAWANLTN AIRETGWAYLDLGTNGSYNDSLQAYAAGVVEASVSEELIYMHWMNTVVNYCG PFEYEVGYCEKLSFLEANLEWMQREMELSPDSPYWHQVRLTLLQLKGLEDS YEGRLTFPTGRFNKPLGFLLLQISGDLEDLEPALNKTNTKPSVSGSGSCSALIKL LPGSHDLLVAHNTWNSYQNMLRIIKKYRLQFREGPQEEYPLIAGNNLIFSSYPG TIFSGDDFYILGSLVTLETTIGNKNPALWKYVQPQGCVLEWIRNIVANRLALD GATWADVFRRFNSGTYNQWMIVDYKAFIPNGPSPGSRVLTILEQIPGMVVVA DKTAELYKTTYWASYNIPYFESVFNASGLQALVAQYGDWFSYTRNPRAKIFQR DQSLVEDVDTMVRLMRYNDFLHDPLSLCEACSPKPAENAISARSDLNPNANG SYPFQALRQRAHGGIDVKVTSVALAKYMSMLAASGPTWDQLPPFQWSKSPFH NMLHMGQPDLWMFSPVKVPWD
<b>Research Area</b>	Others
<b>Source</b>	E.coli
<b>Target Names</b>	Plbd2
<b>Protein Names</b>	Recommended name: Putative phospholipase B-like 2 EC= 3.1.1.- Alternative name(s): LAMA-like protein 2 Lamina ancestor homolog 2 Phospholipase B domain-containing protein 2
<b>Expression Region</b>	36-585aa
<b>Notes</b>	Repeated freezing and thawing is not recommended. Store working aliquots at 4°C for up to one week.
<b>Tag Info</b>	N-terminal 6xHis-SUMO-tagged
<b>Mol. Weight</b>	77.9kDa

**Protein Length****Full Length of Mature Protein****Image**

(Tris-Glycine gel) Discontinuous SDS-PAGE (reduced) with 5% enrichment gel and 15% separation gel.

**Reconstitution**

We recommend that this vial be briefly centrifuged prior to opening to bring the contents to the bottom. Please reconstitute protein in deionized sterile water to a concentration of 0.1-1.0 mg/mL. We recommend to add 5-50% of glycerol (final concentration) and aliquot for long-term storage at -20°C/-80°C. Our default final concentration of glycerol is 50%. Customers could use it as reference.

**Shelf Life**

The shelf life is related to many factors, storage state, buffer ingredients, storage temperature and the stability of the protein itself. Generally, the shelf life of liquid form is 6 months at -20°C/-80°C. The shelf life of lyophilized form is 12 months at -20°C/-80°C.