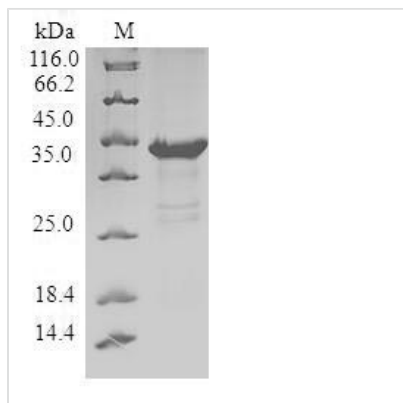




# Recombinant Human Pleckstrin homology-like domain family A member 2 (PHLDA2)

<b>Product Code</b>	CSB-EP687493HU
<b>Relevance</b>	Plays a role in regulating placenta growth. May act via its PH domain that competes with other PH domain-containing proteins, thereby preventing their binding to membrane lipids
<b>Abbreviation</b>	Recombinant Human PHLDA2 protein
<b>Storage</b>	The shelf life is related to many factors, storage state, buffer ingredients, storage temperature and the stability of the protein itself. Generally, the shelf life of liquid form is 6 months at -20°C/-80°C. The shelf life of lyophilized form is 12 months at -20°C/-80°C.
<b>Uniprot No.</b>	Q53GA4
<b>Alias</b>	Beckwith-Wiedemann syndrome chromosomal region 1 candidate gene C protein Imprinted in placenta and liver protein Tumor-suppressing STF cDNA 3 protein Tumor-suppressing subchromosomal transferable fragment candidate gene 3 protein p17-Beckwith-Wiedemann region 1 C
<b>Product Type</b>	Recombinant Protein
<b>Immunogen Species</b>	Homo sapiens (Human)
<b>Purity</b>	≥ 90% as determined by SDS-PAGE.
<b>Sequence</b>	MKSPDEVLREGELEKRSDSLFQLWKKKRGVLTSDRLSLFPASPRARPKELRF HSILKVDCVERTGKYVYFTIVTTDHKEIDFRCAGESCWNAIALALIDFQNRRL QDFRSRQERTAPAAPAEDAVALAAAAAPSEPSRSPQPKPRTTP
<b>Research Area</b>	Cell Biology
<b>Source</b>	E.coli
<b>Target Names</b>	PHLDA2
<b>Protein Names</b>	Recommended name: Pleckstrin homology-like domain family A member 2 Alternative name(s): Beckwith-Wiedemann syndrome chromosomal region 1 candidate gene C protein Imprinted in placenta and liver protein Tumor-suppressing STF cDNA 3 protein
<b>Expression Region</b>	1-152aa
<b>Notes</b>	Repeated freezing and thawing is not recommended. Store working aliquots at 4°C for up to one week.
<b>Tag Info</b>	N-terminal GST-tagged
<b>Mol. Weight</b>	44.1kDa
<b>Protein Length</b>	Full Length
<b>Image</b>	



(Tris-Glycine gel) Discontinuous SDS-PAGE (reduced) with 5% enrichment gel and 15% separation gel.

### Reconstitution

We recommend that this vial be briefly centrifuged prior to opening to bring the contents to the bottom. Please reconstitute protein in deionized sterile water to a concentration of 0.1-1.0 mg/mL. We recommend to add 5-50% of glycerol (final concentration) and aliquot for long-term storage at -20°C/-80°C. Our default final concentration of glycerol is 50%. Customers could use it as reference.

### Shelf Life

The shelf life is related to many factors, storage state, buffer ingredients, storage temperature and the stability of the protein itself. Generally, the shelf life of liquid form is 6 months at -20°C/-80°C. The shelf life of lyophilized form is 12 months at -20°C/-80°C.