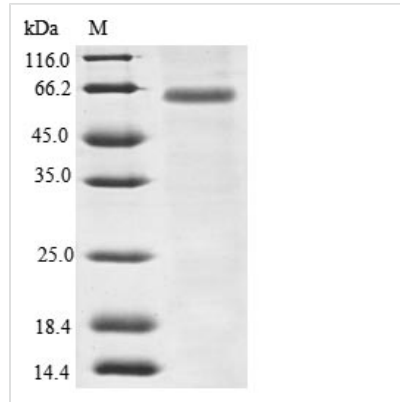




# Recombinant Human Myomegalin (PDE4DIP)

<b>Product Code</b>	CSB-EP716571HU
<b>Relevance</b>	May function as an anchor sequestering components of the cAMP-dependent pathway to Golgi and/or centrosomes.
<b>Abbreviation</b>	Recombinant Human PDE4DIP protein
<b>Storage</b>	The shelf life is related to many factors, storage state, buffer ingredients, storage temperature and the stability of the protein itself. Generally, the shelf life of liquid form is 6 months at -20°C/-80°C. The shelf life of lyophilized form is 12 months at -20°C/-80°C.
<b>Uniprot No.</b>	Q5VU43
<b>Alias</b>	Cardiomyopathy-associated protein 2 Phosphodiesterase 4D-interacting protein
<b>Product Type</b>	Recombinant Protein
<b>Immunogen Species</b>	Homo sapiens (Human)
<b>Purity</b>	≥ 90% as determined by SDS-PAGE.
<b>Sequence</b>	MKGTDSGSCCRRRCDFGCCCRASRRAHYTPYRSGDATRTPQSPRQTPSRE RRRPEPAGSWAAAAEEEEAAAAATPWMRDYFAEDDGEMVPRTSHTAAFLSD TKDRGPPVQSQIWRSGEKVPFVQTYSLRAFEKPPQVQTQALRDFEKHLNDLK KENFSLKLRIYFLEERMQQKYEASREDIYKRNIELKVEVESLKRELQDKKQHLD KTWADVENLNSQNEAELRRQFEERQQETEHVYELLENKIQLLQEESRLAKNEA ARMAALVEAEKECNLELSEKLGVTKNWEDVPGDQVKPDQYTEALAQRDK
<b>Research Area</b>	Signal Transduction
<b>Source</b>	E.coli
<b>Target Names</b>	PDE4DIP
<b>Protein Names</b>	Recommended name: Myomegalin Alternative name(s): Cardiomyopathy-associated protein 2 Phosphodiesterase 4D-interacting protein
<b>Expression Region</b>	1-310aa
<b>Notes</b>	Repeated freezing and thawing is not recommended. Store working aliquots at 4°C for up to one week.
<b>Tag Info</b>	N-terminal GST-tagged
<b>Mol. Weight</b>	63.1kDa
<b>Protein Length</b>	Full Length of Isoform 8
<b>Image</b>	



(Tris-Glycine gel) Discontinuous SDS-PAGE (reduced) with 5% enrichment gel and 15% separation gel.

### Reconstitution

We recommend that this vial be briefly centrifuged prior to opening to bring the contents to the bottom. Please reconstitute protein in deionized sterile water to a concentration of 0.1-1.0 mg/mL. We recommend to add 5-50% of glycerol (final concentration) and aliquot for long-term storage at  $-20^{\circ}\text{C}/-80^{\circ}\text{C}$ . Our default final concentration of glycerol is 50%. Customers could use it as reference.

### Shelf Life

The shelf life is related to many factors, storage state, buffer ingredients, storage temperature and the stability of the protein itself. Generally, the shelf life of liquid form is 6 months at  $-20^{\circ}\text{C}/-80^{\circ}\text{C}$ . The shelf life of lyophilized form is 12 months at  $-20^{\circ}\text{C}/-80^{\circ}\text{C}$ .