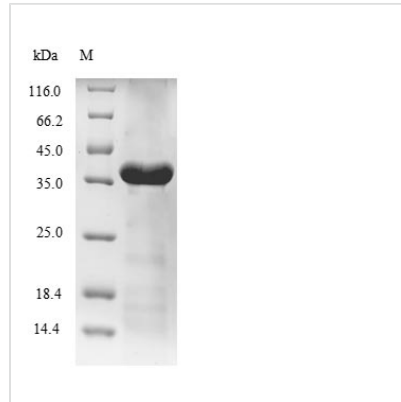




# Recombinant *Desulfotalea psychrophila* DNA ligase (ligA), partial

<b>Product Code</b>	CSB-EP718299DAAA
<b>Relevance</b>	DNA ligase that catalyzes the formation of phosphodiester linkages between 5'-phosphoryl and 3'-hydroxyl groups in double-stranded DNA using NAD as a coenzyme and as the energy source for the reaction. It is essential for DNA replication and repair of damaged DNA.
<b>Abbreviation</b>	Recombinant <i>Desulfotalea psychrophila</i> ligA protein, partial
<b>Storage</b>	The shelf life is related to many factors, storage state, buffer ingredients, storage temperature and the stability of the protein itself. Generally, the shelf life of liquid form is 6 months at -20°C/-80°C. The shelf life of lyophilized form is 12 months at -20°C/-80°C.
<b>Uniprot No.</b>	Q6API9
<b>Product Type</b>	Recombinant Protein
<b>Immunogen Species</b>	<i>Desulfotalea psychrophila</i> (strain LSv54 / DSM 12343)
<b>Purity</b>	≥ 85% as determined by SDS-PAGE.
<b>Sequence</b>	RPQTSRLGRVNPVAEVEPTRLSGALIQRVTAHHYAMVRDRGIGPGARIRMSRS GEVIPKIEEVVKPVAAAQLDIPAHCPSCGSDLAWDGDYLFCLNNMSCPAQITNS MEHFFKILGNVDGFGPSSVQRLYEGGLVDLPALYAMESADFEQVGFQPKQAT NMVEQLNRSREELIEDWRFLAAFVHRLGMGNCEKLLRYVRLEDVFNLSEEQI VAEIKGFQEKTAHSICAGLAGIKDLFFQLFALGFKLEPTPLLAEGGQGEKSPISG KTIVFTGAMLAASRGDMEKQAKALGATVGKSITGKTDMLVTGQRVGATKMAK AETLGIAILSEEAYRQLVSLD
<b>Research Area</b>	Epigenetics and Nuclear Signaling
<b>Source</b>	<i>E. coli</i>
<b>Target Names</b>	ligA
<b>Protein Names</b>	Polydeoxyribonucleotide synthase [NAD(+)]
<b>Expression Region</b>	340-679aa
<b>Notes</b>	Repeated freezing and thawing is not recommended. Store working aliquots at 4°C for up to one week.
<b>Tag Info</b>	N-terminal 10xHis-tagged
<b>Mol. Weight</b>	40.4 kDa
<b>Protein Length</b>	Partial
<b>Image</b>	



(Tris-Glycine gel) Discontinuous SDS-PAGE (reduced) with 5% enrichment gel and 15% separation gel.

### Reconstitution

We recommend that this vial be briefly centrifuged prior to opening to bring the contents to the bottom. Please reconstitute protein in deionized sterile water to a concentration of 0.1-1.0 mg/mL. We recommend to add 5-50% of glycerol (final concentration) and aliquot for long-term storage at -20°C/-80°C. Our default final concentration of glycerol is 50%. Customers could use it as reference.

### Shelf Life

The shelf life is related to many factors, storage state, buffer ingredients, storage temperature and the stability of the protein itself. Generally, the shelf life of liquid form is 6 months at -20°C/-80°C. The shelf life of lyophilized form is 12 months at -20°C/-80°C.