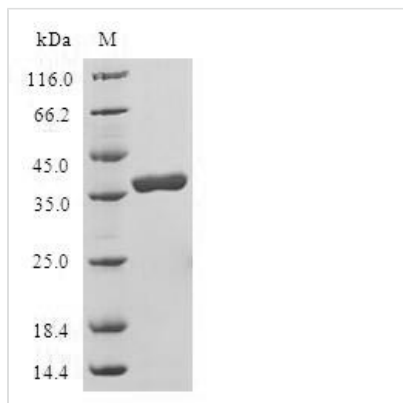




Recombinant Human Late cornified envelope-like proline-rich protein 1 (LELP1)

Product Code	CSB-EP719414HU
Abbreviation	Recombinant Human LELP1 protein
Storage	The shelf life is related to many factors, storage state, buffer ingredients, storage temperature and the stability of the protein itself. Generally, the shelf life of liquid form is 6 months at -20°C/-80°C. The shelf life of lyophilized form is 12 months at -20°C/-80°C.
Uniprot No.	Q5T871
Alias	Novel small proline-rich protein
Product Type	Recombinant Protein
Immunogen Species	Homo sapiens (Human)
Purity	≥ 90% as determined by SDS-PAGE.
Sequence	MSSDDKSKSNDPKTEPKNCDPKCEQKCESKQPSCLKKLLQRCFEKCPWEK CPAPPKCLPCPSQSPSSCPPQPCTKPCPPKCPSSCPHACPPPCPPPE
Research Area	others
Source	E.coli
Target Names	LELP1
Protein Names	Recommended name: Late cornified envelope-like proline-rich protein 1 Alternative name(s): Novel small proline-rich protein
Expression Region	1-98aa
Notes	Repeated freezing and thawing is not recommended. Store working aliquots at 4°C for up to one week.
Tag Info	N-terminal GST-tagged
Mol. Weight	37.7kDa
Protein Length	Full Length

Image



(Tris-Glycine gel) Discontinuous SDS-PAGE (reduced) with 5% enrichment gel and 15% separation gel.



Reconstitution

We recommend that this vial be briefly centrifuged prior to opening to bring the contents to the bottom. Please reconstitute protein in deionized sterile water to a concentration of 0.1-1.0 mg/mL. We recommend to add 5-50% of glycerol (final concentration) and aliquot for long-term storage at -20°C/-80°C. Our default final concentration of glycerol is 50%. Customers could use it as reference.

Shelf Life

The shelf life is related to many factors, storage state, buffer ingredients, storage temperature and the stability of the protein itself.

Generally, the shelf life of liquid form is 6 months at -20°C/-80°C. The shelf life of lyophilized form is 12 months at -20°C/-80°C.