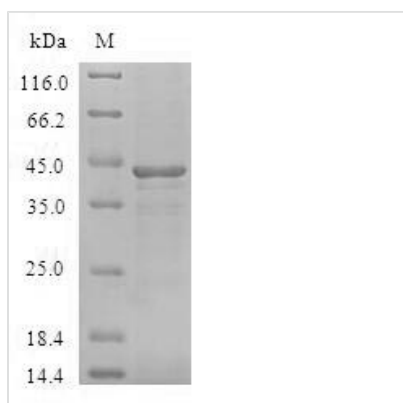




Recombinant Human Bcl-2-like protein 15 (BCL2L15)

Product Code	CSB-EP719420HU
Abbreviation	Recombinant Human BCL2L15 protein
Storage	The shelf life is related to many factors, storage state, buffer ingredients, storage temperature and the stability of the protein itself. Generally, the shelf life of liquid form is 6 months at -20°C/-80°C. The shelf life of lyophilized form is 12 months at -20°C/-80°C.
Uniprot No.	Q5TBC7
Product Type	Recombinant Protein
Immunogen Species	Homo sapiens (Human)
Purity	Greater than 90% as determined by SDS-PAGE.
Sequence	MKSSQTFEEQTECIVNTLLMDFLSPTLQVASRNLCVDEVDSGEPCSFVDVAIIA GRLRMLGDQFNGELEASAKNVIAETIKGQTGAILQNTVESLSKTWCAQDSSLA YERAFLAVSVKLLEYMAHIAPEVVGQVAIPMTGMINGNQAIREFIQGGGWEN LES
Research Area	others
Source	E.coli
Target Names	BCL2L15
Protein Names	Recommended name: Bcl-2-like protein 15 Short name= Bcl2-L-15
Expression Region	1-163aa
Notes	Repeated freezing and thawing is not recommended. Store working aliquots at 4°C for up to one week.
Tag Info	N-terminal GST-tagged
Mol. Weight	44.7kDa
Protein Length	Full Length of BC127719

Image



(Tris-Glycine gel) Discontinuous SDS-PAGE (reduced) with 5% enrichment gel and 15% separation gel.



Reconstitution

We recommend that this vial be briefly centrifuged prior to opening to bring the contents to the bottom. Please reconstitute protein in deionized sterile water to a concentration of 0.1-1.0 mg/mL. We recommend to add 5-50% of glycerol (final concentration) and aliquot for long-term storage at -20°C/-80°C. Our default final concentration of glycerol is 50%. Customers could use it as reference.

Shelf Life

The shelf life is related to many factors, storage state, buffer ingredients, storage temperature and the stability of the protein itself.

Generally, the shelf life of liquid form is 6 months at -20°C/-80°C. The shelf life of lyophilized form is 12 months at -20°C/-80°C.