

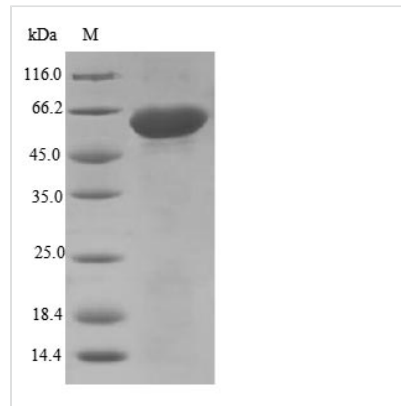


Recombinant Mouse Disintegrin and metalloproteinase domain-containing protein 12 (Adam12), partial

Product Code	CSB-EP720263MO
Relevance	Involved in skeletal muscle regeneration, specifically at the onset of cell fusion. Also involved in macrophage-derived giant cells (MGC) and osteoclast formation from mononuclear precursors.
Abbreviation	Recombinant Mouse Adam12 protein, partial
Storage	The shelf life is related to many factors, storage state, buffer ingredients, storage temperature and the stability of the protein itself. Generally, the shelf life of liquid form is 6 months at -20°C/-80°C. The shelf life of lyophilized form is 12 months at -20°C/-80°C.
Uniprot No.	Q61824
Product Type	Recombinant Protein
Immunogen Species	Mus musculus (Mouse)
Purity	≥ 85% as determined by SDS-PAGE.
Sequence	ETLKMTKYVELVIVADNREFQRQGDLEKVKQRLIEIANHVDFYRPLNIRIVLV GVEVWNDIDKCSISQDPFTSLHEFLDWRKIKLLPRKSHDNAQLISGVYFQGTTI GMAPIMSMCTAEQSGGVMDHSDSPLGAAVTLAHELGHNFNGMNHDTLARGC SCRMAAEKGGCIMPSTGFPFPMVFSSCSRKDLEASLEKGMGMCLFNLPEVK QAFGGRKCGNGYVEEGEECDCEPEECTNRCCNATTCTLKPDVCAHGQC CEDCQLKPPGTACRGSSNSCDLPEFCTGTAPHCPANVYLHDGHPGQGVVDGY CYNGICQTHEQQCVTLWGPAGKAPAGICFERVNSAGDPYGNCGKDSKSAFA KCELRDAKCGKIQCQGGASRPVIGTNAVSIETNIPQQEGGRILCRGTHVYLG DMPDPGLVLAGTKCAEGKICLNRRQCNISVFGVHKCAMQCHGRGVCNNRKN CHCEAHWAPPFCDFGFGGSTDSGPIRQADNQG
Research Area	Cancer
Source	E.coli
Target Names	Adam12
Protein Names	Meltrin-alpha () Mltna
Expression Region	206-706aa
Notes	Repeated freezing and thawing is not recommended. Store working aliquots at 4°C for up to one week.
Tag Info	N-terminal 10xHis-tagged and C-terminal Myc-tagged
Mol. Weight	61.4 kDa
Protein Length	Partial



Image



(Tris-Glycine gel) Discontinuous SDS-PAGE (reduced) with 5% enrichment gel and 15% separation gel.

Reconstitution

We recommend that this vial be briefly centrifuged prior to opening to bring the contents to the bottom. Please reconstitute protein in deionized sterile water to a concentration of 0.1-1.0 mg/mL. We recommend to add 5-50% of glycerol (final concentration) and aliquot for long-term storage at -20°C/-80°C. Our default final concentration of glycerol is 50%. Customers could use it as reference.

Shelf Life

The shelf life is related to many factors, storage state, buffer ingredients, storage temperature and the stability of the protein itself. Generally, the shelf life of liquid form is 6 months at -20°C/-80°C. The shelf life of lyophilized form is 12 months at -20°C/-80°C.