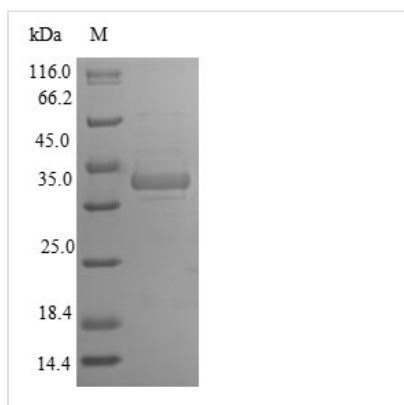




Recombinant Rat FAD-linked sulfhydryl oxidase ALR (Gfer)

Product Code	CSB-EP733907RA
Relevance	FAD-dependent sulfhydryl oxidase that regenerates the redox-active disulfide bonds in CHCHD4/MIA40, a chaperone essential for disulfide bond formation and protein folding in the mitochondrial intermembrane space. The reduced form of CHCHD4/MIA40 forms a transient intermolecular disulfide bridge with GFER/ERV1, resulting in regeneration of the essential disulfide bonds in CHCHD4/MIA40, while GFER/ERV1 becomes re-oxidized by donating electrons to cytochrome c or molecular oxygen. May have a function in liver regeneration and spermatogenesis
Abbreviation	Recombinant Rat Gfer protein
Storage	The shelf life is related to many factors, storage state, buffer ingredients, storage temperature and the stability of the protein itself. Generally, the shelf life of liquid form is 6 months at -20°C/-80°C. The shelf life of lyophilized form is 12 months at -20°C/-80°C.
Uniprot No.	Q63042
Alias	Augmenter of liver regeneration
Product Type	Recombinant Protein
Immunogen Species	Rattus norvegicus (Rat)
Purity	≥ 90% as determined by SDS-PAGE.
Sequence	MAAPSEPAGFPRGSRFSFLPGGAHSEMTDDLVTDARGRGARHRKDNAPAAA PAPKGLEHGKRPCRACVDFKSWMRTQQKRDIKFREDCPQDREELGRNTWAF LHTLAAYYPDMPTEQQQDMAQFIHIFSKFYPCEECAEDIRKRIDRSQPDTSTR VSFSQWLCRLHNEVNRKLGKPDFDCSRVDERWRDGGWKGSCD
Research Area	Signal Transduction
Source	E.coli
Target Names	Gfer
Protein Names	Recommended name: FAD-linked sulfhydryl oxidase ALR EC= 1.8.3.2 Alternative name(s): Augmenter of liver regeneration
Expression Region	1-198aa
Notes	Repeated freezing and thawing is not recommended. Store working aliquots at 4°C for up to one week.
Tag Info	N-terminal 6xHis-SUMO-tagged
Mol. Weight	38.8kDa
Protein Length	Full Length
Image	



(Tris-Glycine gel) Discontinuous SDS-PAGE (reduced) with 5% enrichment gel and 15% separation gel.

Reconstitution

We recommend that this vial be briefly centrifuged prior to opening to bring the contents to the bottom. Please reconstitute protein in deionized sterile water to a concentration of 0.1-1.0 mg/mL. We recommend to add 5-50% of glycerol (final concentration) and aliquot for long-term storage at -20°C/-80°C. Our default final concentration of glycerol is 50%. Customers could use it as reference.

Shelf Life

The shelf life is related to many factors, storage state, buffer ingredients, storage temperature and the stability of the protein itself. Generally, the shelf life of liquid form is 6 months at -20°C/-80°C. The shelf life of lyophilized form is 12 months at -20°C/-80°C.