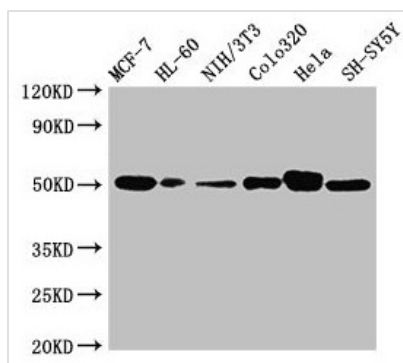




CALR Antibody

Product Code	CSB-PA004458YA01HU
Storage	Upon receipt, store at -20°C or -80°C. Avoid repeated freeze.
Uniprot No.	P27797
Immunogen	Recombinant Human Calreticulin protein (18-417AA)
Raised In	Rabbit
Species Reactivity	Human, Mouse
Tested Applications	ELISA, WB, IHC, IF; Recommended dilution: WB:1:500-1:5000, IHC:1:20-1:200, IF:1:50-1:200
Form	Liquid
Conjugate	Non-conjugated
Storage Buffer	Preservative: 0.03% Proclin 300 Constituents: 50% Glycerol, 0.01M PBS, PH 7.4
Purification Method	>95%, Protein G purified
Isotype	IgG
Clonality	Polyclonal
Alias	Calreticulin (CRP55) (Calregulin) (Endoplasmic reticulum resident protein 60) (ERp60) (HACBP) (grp60), CALR, CRTC
Immunogen Species	Homo sapiens (Human)
Research Area	Tags & Cell Markers
Target Names	CALR

Image



Western Blot

Positive WB detected in: MCF-7 whole cell lysate, HL60 whole cell lysate, NIH/3T3 whole cell lysate, Colo320 whole cell lysate, HeLa whole cell lysate, SH-SY5Y whole cell lysate

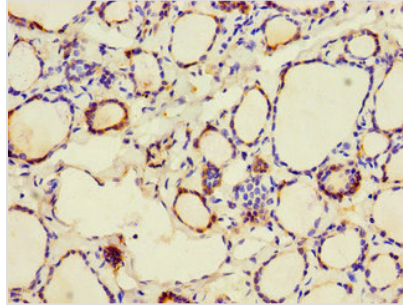
All lanes: CALR antibody at 2µg/ml

Secondary

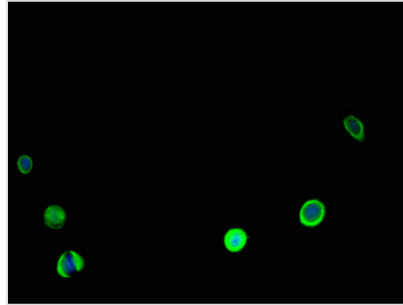
Goat polyclonal to rabbit IgG at 1/10000 dilution

Predicted band size: 49 kDa

Observed band size: 49 kDa



Immunohistochemistry of paraffin-embedded human thyroid tissue using CSB-PA004458YA01HU at dilution of 1:100



Immunofluorescent analysis of MCF-7 cells using CSB-PA004458YA01HU at dilution of 1:100 and Alexa Fluor 488-conjugated AffiniPure Goat Anti-Rabbit IgG(H+L)

Usage

For Research Use Only. Not for use in diagnostic or therapeutic procedures.