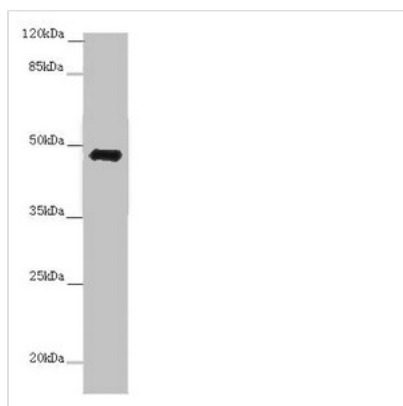




# E2F1 Antibody

<b>Product Code</b>	CSB-PA007340LA01HU
<b>Storage</b>	Upon receipt, store at -20°C or -80°C. Avoid repeated freeze.
<b>Uniprot No.</b>	Q01094
<b>Immunogen</b>	Recombinant Human Transcription factor E2F1 protein (133-362AA)
<b>Raised In</b>	Rabbit
<b>Species Reactivity</b>	Human, Mouse
<b>Tested Applications</b>	ELISA, WB, IHC, IP; Recommended dilution: WB:1:500-1:5000, IHC:1:20-1:200, IP:1:200-1:2000
<b>Form</b>	Liquid
<b>Conjugate</b>	Non-conjugated
<b>Storage Buffer</b>	Preservative: 0.03% Proclin 300 Constituents: 50% Glycerol, 0.01M PBS, PH 7.4
<b>Purification Method</b>	>95%, Protein G purified
<b>Isotype</b>	IgG
<b>Clonality</b>	Polyclonal
<b>Alias</b>	Transcription factor E2F1 (E2F-1) (PBR3) (Retinoblastoma-associated protein 1) (RBAP-1) (Retinoblastoma-binding protein 3) (RBBP-3) (pRB-binding protein E2F-1), E2F1, RBBP3
<b>Immunogen Species</b>	Homo sapiens (Human)
<b>Research Area</b>	Epigenetics and Nuclear Signaling
<b>Target Names</b>	E2F1

## Image



### Western blot

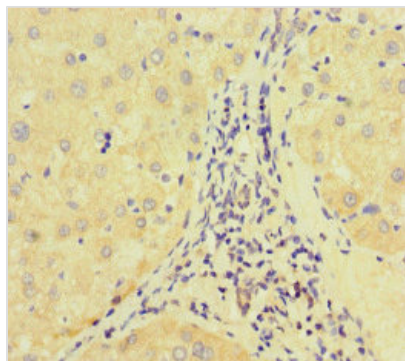
All lanes: E2F1 antibody at 7 µg/ml + 3T3 whole cell lysate

Secondary

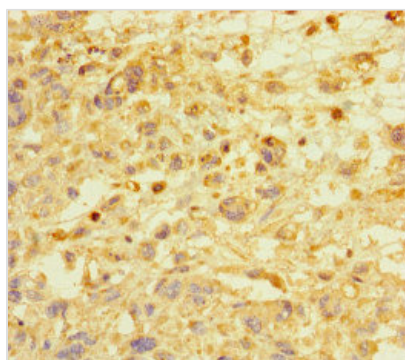
Goat polyclonal to rabbit IgG at 1/10000 dilution

Predicted band size: 47 kDa

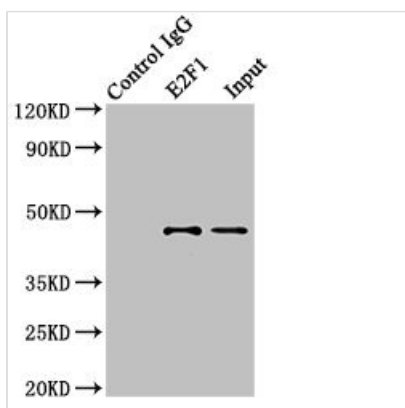
Observed band size: 47 kDa



Immunohistochemistry of paraffin-embedded human liver cancer using CSB-PA007340LA01HU at dilution of 1:100



Immunohistochemistry of paraffin-embedded human melanoma using CSB-PA007340LA01HU at dilution of 1:100



Immunoprecipitating E2F1 in 3T3 whole cell lysate  
 Lane 1: Rabbit control IgG (1 $\mu$ g) instead of CSB-PA007340LA01HU in 3T3 whole cell lysate. For western blotting, a HRP-conjugated light chain specific antibody was used as the secondary antibody (1/50000)  
 Lane 2: CSB-PA007340LA01HU (8 $\mu$ g) + 3T3 whole cell lysate (500 $\mu$ g)  
 Lane 3: 3T3 whole cell lysate (10 $\mu$ g)

**Usage**

For Research Use Only. Not for use in diagnostic or therapeutic procedures.