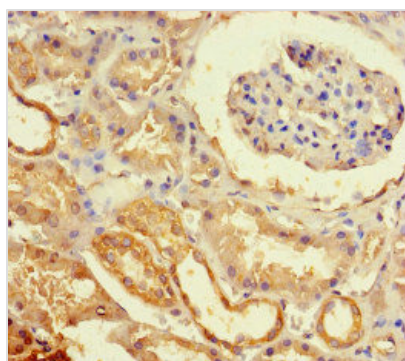




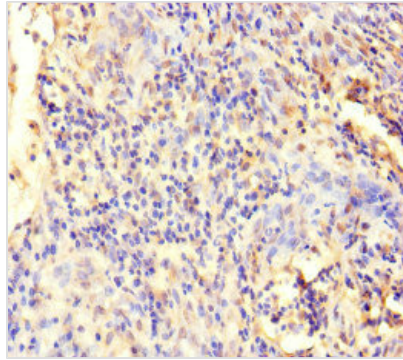
ECEL1 Antibody

Product Code	CSB-PA007373LA01HU
Storage	Upon receipt, store at -20°C or -80°C. Avoid repeated freeze.
Uniprot No.	O95672
Immunogen	Recombinant Human Endothelin-converting enzyme-like 1 protein (425-775AA)
Raised In	Rabbit
Species Reactivity	Human
Tested Applications	ELISA, IHC, IF; Recommended dilution: IHC:1:20-1:200, IF:1:50-1:200
Form	Liquid
Conjugate	Non-conjugated
Storage Buffer	Preservative: 0.03% Proclin 300 Constituents: 50% Glycerol, 0.01M PBS, PH 7.4
Purification Method	>95%, Protein G purified
Isotype	IgG
Clonality	Polyclonal
Alias	Endothelin-converting enzyme-like 1 (EC 3.4.24.-) (Xce protein), ECEL1, XCE
Immunogen Species	Homo sapiens (Human)
Research Area	Others
Target Names	ECEL1

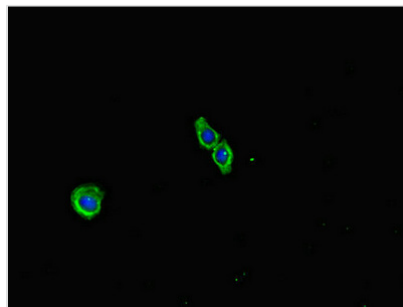
Image



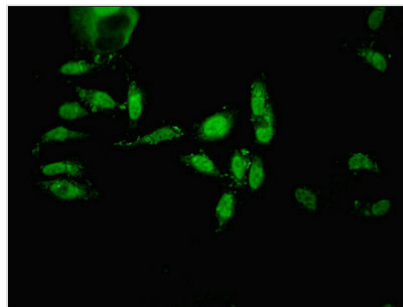
Immunohistochemistry of paraffin-embedded human kidney tissue using CSB-PA007373LA01HU at dilution of 1:100



Immunohistochemistry of paraffin-embedded human cervical cancer using CSB-PA007373LA01HU at dilution of 1:100



Immunofluorescent analysis of HepG2 cells using CSB-PA007373LA01HU at dilution of 1:100 and Alexa Fluor 488-conjugated AffiniPure Goat Anti-Rabbit IgG(H+L)



Immunofluorescent analysis of HeLa cells using CSB-PA007373LA01HU at dilution of 1:100 and Alexa Fluor 488-conjugated AffiniPure Goat Anti-Rabbit IgG(H+L)