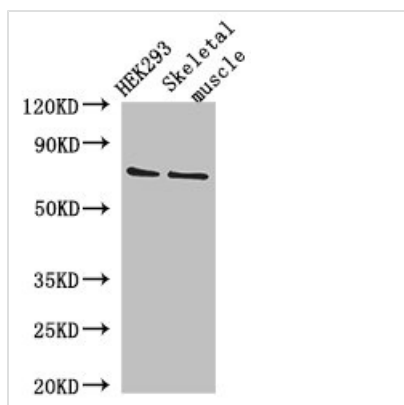




EFCAB7 Antibody

| | |
|----------------------------|------------------------------------------------------------------------------------------|
| Product Code | CSB-PA007447LA01HU |
| Storage | Upon receipt, store at -20°C or -80°C. Avoid repeated freeze. |
| Uniprot No. | A8K855 |
| Immunogen | Recombinant Human EF-hand calcium-binding domain-containing protein 7 protein (1-158AA) |
| Raised In | Rabbit |
| Species Reactivity | Human, Mouse |
| Tested Applications | ELISA, WB, IHC, IF; Recommended dilution: WB:1:500-1:5000, IHC:1:20-1:200, IF:1:50-1:200 |
| Form | Liquid |
| Conjugate | Non-conjugated |
| Storage Buffer | Preservative: 0.03% Proclin 300 Constituents: 50% Glycerol, 0.01M PBS, PH 7.4 |
| Purification Method | >95%, Protein G purified |
| Isotype | IgG |
| Clonality | Polyclonal |
| Alias | EF-hand calcium-binding domain-containing protein 7, EFCAB7, KIAA1799 |
| Immunogen Species | Homo sapiens (Human) |
| Research Area | Signal Transduction |
| Target Names | EFCAB7 |

Image



Western Blot

Positive WB detected in: HEK293 whole cell lysate, Mouse skeletal muscle tissue

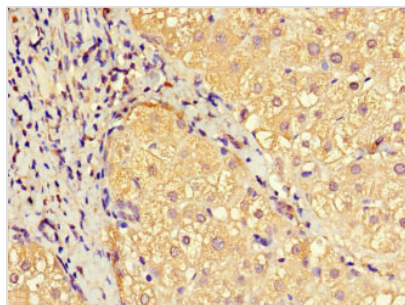
All lanes: EFCAB7 antibody at 2.8µg/ml

Secondary

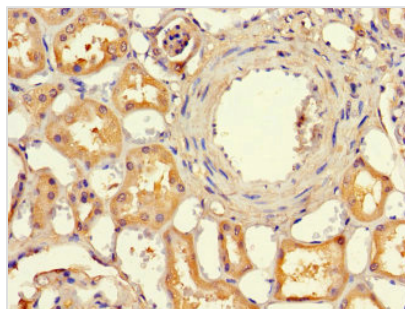
Goat polyclonal to rabbit IgG at 1/50000 dilution

Predicted band size: 72, 70 kDa

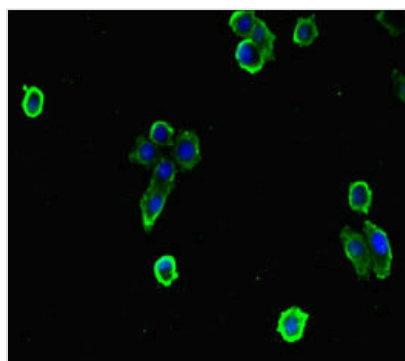
Observed band size: 72 kDa



Immunohistochemistry of paraffin-embedded human liver cancer using CSB-PA007447LA01HU at dilution of 1:100



Immunohistochemistry of paraffin-embedded human kidney tissue using CSB-PA007447LA01HU at dilution of 1:100



Immunofluorescent analysis of HepG2 cells using CSB-PA007447LA01HU at dilution of 1:100 and Alexa Fluor 488-conjugated AffiniPure Goat Anti-Rabbit IgG(H+L)

Usage

For Research Use Only. Not for use in diagnostic or therapeutic procedures.