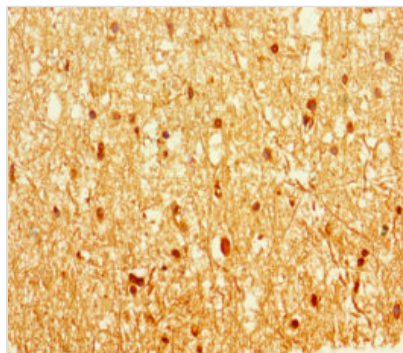




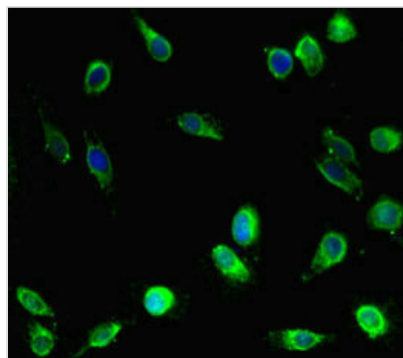
EPM2A Antibody

Product Code	CSB-PA007738LA01HU
Storage	Upon receipt, store at -20°C or -80°C. Avoid repeated freeze.
Uniprot No.	B3EWF7
Immunogen	Recombinant Human Laforin, isoform 9 protein (1-331AA)
Raised In	Rabbit
Species Reactivity	Human, Mouse
Tested Applications	ELISA, WB, IHC, IF; Recommended dilution: WB:1:2000-1:5000, IHC:1:20-1:200, IF:1:50-1:200
Form	Liquid
Conjugate	Non-conjugated
Storage Buffer	Preservative: 0.03% Proclin 300 Constituents: 50% Glycerol, 0.01M PBS, PH 7.4
Purification Method	>95%, Protein G purified
Isotype	IgG
Clonality	Polyclonal
Alias	Laforin, isoform 9, EPM2A
Immunogen Species	Homo sapiens (Human)
Research Area	Others
Target Names	EPM2A

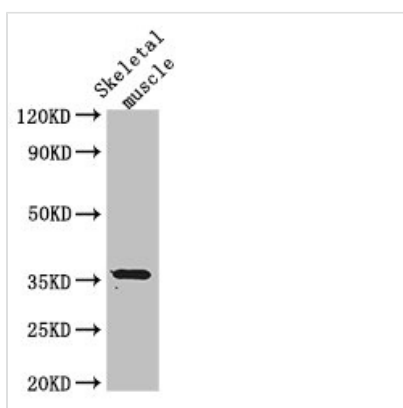
Image



Immunohistochemistry of paraffin-embedded human brain tissue using CSB-PA007738LA01HU at dilution of 1:100



Immunofluorescent analysis of HeLa cells using CSB-PA007738LA01HU at dilution of 1:100 and Alexa Fluor 488-conjugated AffiniPure Goat Anti-Rabbit IgG(H+L)



Western Blot

Positive WB detected in: Mouse skeletal muscle tissue

All lanes: EPM2A antibody at 3μg/ml

Secondary

Goat polyclonal to rabbit IgG at 1/50000 dilution

Predicted band size: 36, 38, 16, 25, 10, 21, 23 kDa

Observed band size: 36 kDa