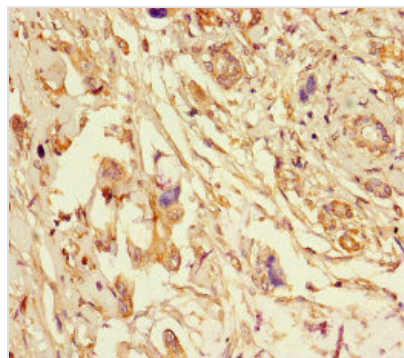




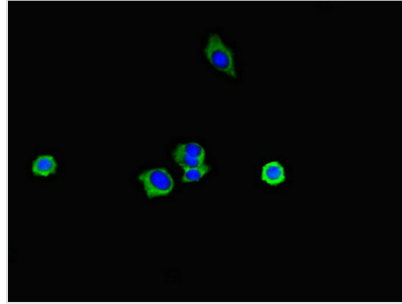
ERLIN2 Antibody

Product Code	CSB-PA007791LA01HU
Storage	Upon receipt, store at -20°C or -80°C. Avoid repeated freeze.
Uniprot No.	O94905
Immunogen	Recombinant Human Erlin-2 protein (25-206AA)
Raised In	Rabbit
Species Reactivity	Human
Tested Applications	ELISA, IHC, IF; Recommended dilution: IHC:1:20-1:200, IF:1:50-1:200
Form	Liquid
Conjugate	Non-conjugated
Storage Buffer	Preservative: 0.03% Proclin 300 Constituents: 50% Glycerol, 0.01M PBS, PH 7.4
Purification Method	>95%, Protein G purified
Isotype	IgG
Clonality	Polyclonal
Alias	Erlin-2 (Endoplasmic reticulum lipid raft-associated protein 2) (Stomatin-prohibitin-flotillin-HflC/K domain-containing protein 2) (SPFH domain-containing protein 2), ERLIN2, C8orf2 SPFH2
Immunogen Species	Homo sapiens (Human)
Research Area	Neuroscience
Target Names	ERLIN2

Image



Immunohistochemistry of paraffin-embedded human pancreatic cancer using CSB-PA007791LA01HU at dilution of 1:100



Immunofluorescent analysis of HepG2 cells using CSB-PA007791LA01HU at dilution of 1:100 and Alexa Fluor 488-conjugated AffiniPure Goat Anti-Rabbit IgG(H+L)

Usage

For Research Use Only. Not for use in diagnostic or therapeutic procedures.