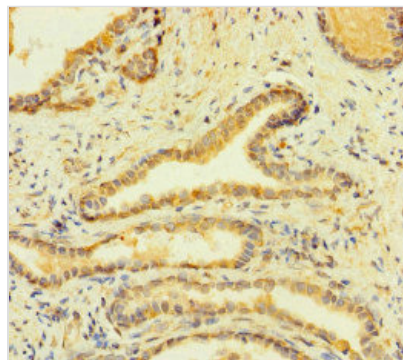




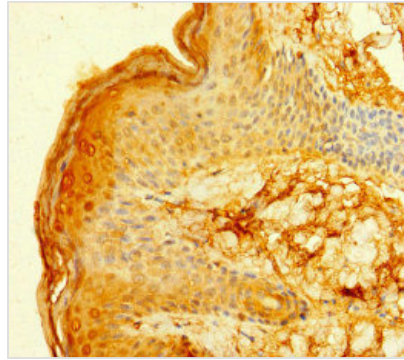
FCER1A Antibody

Product Code	CSB-PA008532LA01HU
Storage	Upon receipt, store at -20°C or -80°C. Avoid repeated freeze.
Uniprot No.	P12319
Immunogen	Recombinant Human High affinity immunoglobulin epsilon receptor subunit alpha protein
Raised In	Rabbit
Species Reactivity	Human, Mouse
Tested Applications	ELISA, WB, IHC, IF; Recommended dilution: WB:1:2000-1:5000, IHC:1:20-1:200, IF:1:50-1:200
Form	Liquid
Conjugate	Non-conjugated
Storage Buffer	BS with 0.1% Sodium Azide, 50% Glycerol, pH 7.3
Purification Method	Antigen Affinity purified
Isotype	IgG
Clonality	Polyclonal
Product Type	Polyclonal Antibody
Immunogen Species	Homo sapiens (Human)
Research Area	Immunology
Target Names	FCER1A

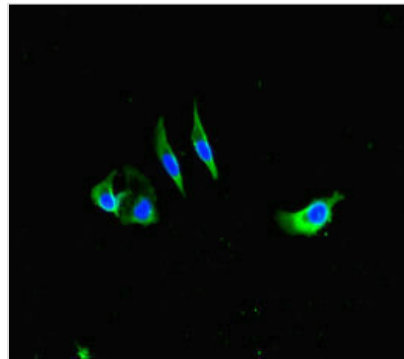
Image



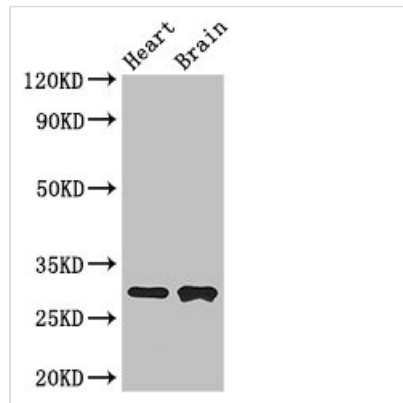
Immunohistochemistry of paraffin-embedded human prostate cancer using CSB-PA008532LA01HU at dilution of 1:100



Immunohistochemistry of paraffin-embedded human skin tissue using CSB-PA008532LA01HU at dilution of 1:100



Immunofluorescent analysis of HeLa cells using CSB-PA008532LA01HU at dilution of 1:100 and Alexa Fluor 488-conjugated AffiniPure Goat Anti-Rabbit IgG(H+L)



Western Blot

Positive WB detected in: Mouse heart tissue, Mouse brain tissue

All lanes: FCER1A antibody at 3 μ g/ml

Secondary

Goat polyclonal to rabbit IgG at 1/50000 dilution

Predicted band size: 30 kDa

Observed band size: 30 kDa