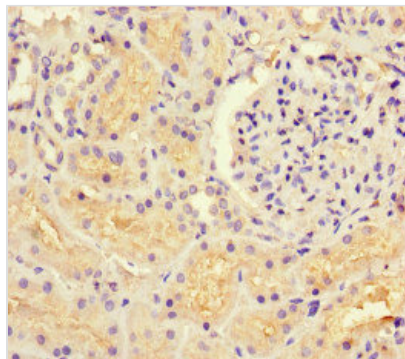




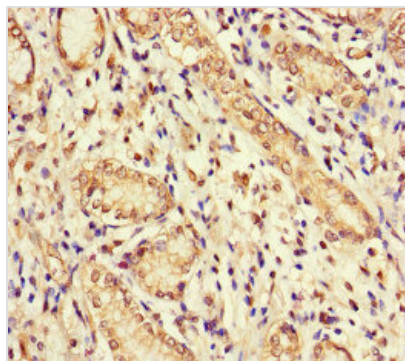
# GUCY1A1 Antibody

|                            |  |
|----------------------------|--|
| <b>Product Code</b>        | CSB-PA010050LA01HU   |
| <b>Storage</b>             | Upon receipt, store at -20°C or -80°C. Avoid repeated freeze.  |
| <b>Uniprot No.</b>         | Q02108   |
| <b>Immunogen</b>           | Recombinant Human Guanylate cyclase soluble subunit alpha-1 protein (20-152AA)   |
| <b>Raised In</b>           | Rabbit   |
| <b>Species Reactivity</b>  | Human  |
| <b>Tested Applications</b> | ELISA, IHC, IF; Recommended dilution: IHC:1:20-1:200, IF:1:50-1:200  |
| <b>Form</b>                | Liquid   |
| <b>Conjugate</b>           | Non-conjugated   |
| <b>Storage Buffer</b>      | Preservative: 0.03% Proclin 300<br>Constituents: 50% Glycerol, 0.01M PBS, PH 7.4   |
| <b>Purification Method</b> | >95%, Protein G purified   |
| <b>Isotype</b>             | IgG  |
| <b>Clonality</b>           | Polyclonal   |
| <b>Alias</b>               | Guanylate cyclase soluble subunit alpha-1 (GCS-alpha-1) (EC 4.6.1.2) (Guanylate cyclase soluble subunit alpha-3) (GCS-alpha-3) (Soluble guanylate cyclase large subunit), GUCY1A1, GUC1A3 GUCSA3 GUCY1A3 |
| <b>Immunogen Species</b>   | Homo sapiens (Human)   |
| <b>Research Area</b>       | Signal Transduction  |
| <b>Target Names</b>        | GUCY1A1  |

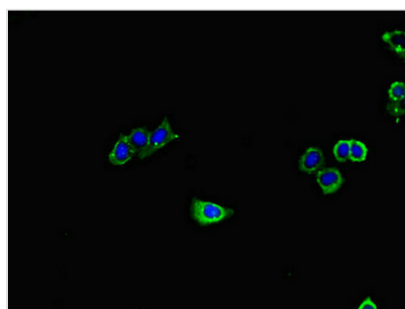
## Image



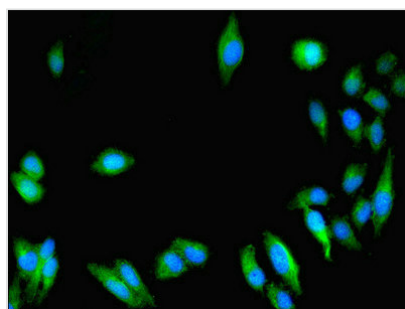
Immunohistochemistry of paraffin-embedded human kidney tissue using CSB-PA010050LA01HU at dilution of 1:100



Immunohistochemistry of paraffin-embedded human gastric cancer using CSB-PA010050LA01HU at dilution of 1:100



Immunofluorescent analysis of HepG2 cells using CSB-PA010050LA01HU at dilution of 1:100 and Alexa Fluor 488-conjugated AffiniPure Goat Anti-Rabbit IgG(H+L)



Immunofluorescent analysis of HeLa cells using CSB-PA010050LA01HU at dilution of 1:100 and Alexa Fluor 488-conjugated AffiniPure Goat Anti-Rabbit IgG(H+L)