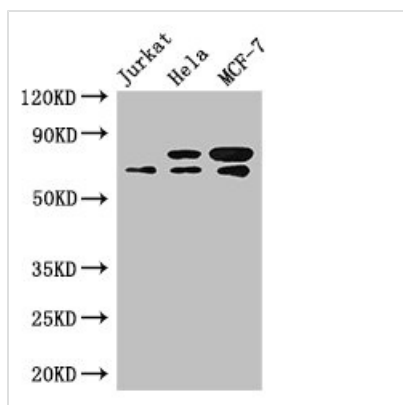




INTS9 Antibody

Product Code	CSB-PA011767LA01HU
Storage	Upon receipt, store at -20°C or -80°C. Avoid repeated freeze.
Uniprot No.	Q9NV88
Immunogen	Recombinant Human Integrator complex subunit 9 protein (368-658AA)
Raised In	Rabbit
Species Reactivity	Human
Tested Applications	ELISA, WB, IHC, IF; Recommended dilution: WB:1:2000-1:5000, IHC:1:20-1:200, IF:1:50-1:200
Form	Liquid
Conjugate	Non-conjugated
Storage Buffer	Preservative: 0.03% Proclin 300 Constituents: 50% Glycerol, 0.01M PBS, PH 7.4
Purification Method	>95%, Protein G purified
Isotype	IgG
Clonality	Polyclonal
Alias	Integrator complex subunit 9 (Int9) (Protein related to CPSF subunits of 74 kDa) (RC-74), INTS9, RC74
Immunogen Species	Homo sapiens (Human)
Research Area	Others
Target Names	INTS9

Image

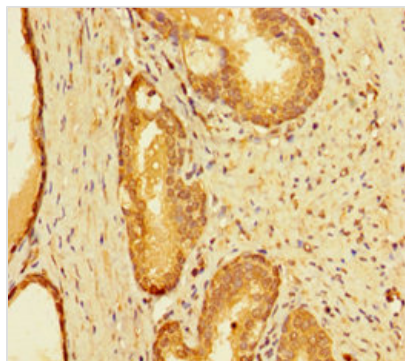


Western Blot

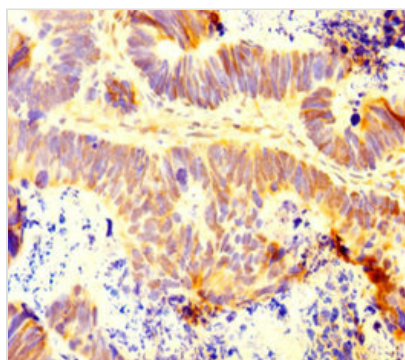
Positive WB detected in: Jurkat whole cell lysate, HeLa whole cell lysate, MCF-7 whole cell lysate
All lanes: INTS9 antibody at 3.4µg/ml

Secondary

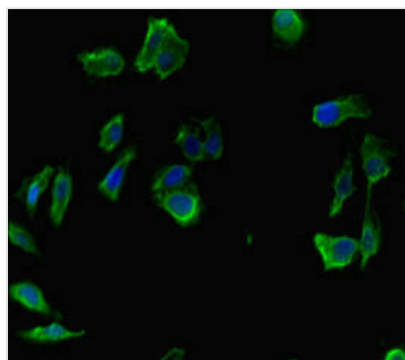
Goat polyclonal to rabbit IgG at 1/50000 dilution
Predicted band size: 74, 72 kDa
Observed band size: 74, 72 kDa



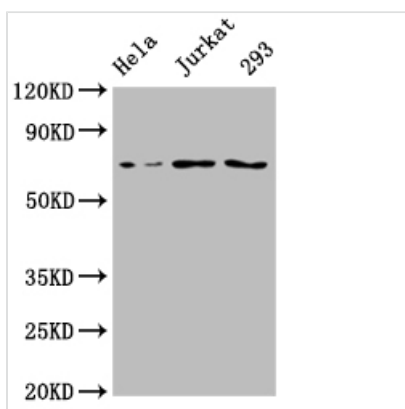
Immunohistochemistry of paraffin-embedded human prostate cancer using CSB-PA011767LA01HU at dilution of 1:100



Immunohistochemistry of paraffin-embedded human ovarian cancer using CSB-PA011767LA01HU at dilution of 1:100



Immunofluorescent analysis of HeLa cells using CSB-PA011767LA01HU at dilution of 1:100 and Alexa Fluor 488-conjugated AffiniPure Goat Anti-Rabbit IgG(H+L)



Western Blot
 Positive WB detected in: HeLa whole cell lysate, Jurkat whole cell lysate, 293 whole cell lysate
 All lanes: INTS9 antibody at 1:2000
 Secondary
 Goat polyclonal to rabbit IgG at 1/50000 dilution
 Predicted band size: 74, 72 kDa
 Observed band size: 74 kDa

Usage

For Research Use Only. Not for use in diagnostic or therapeutic procedures.