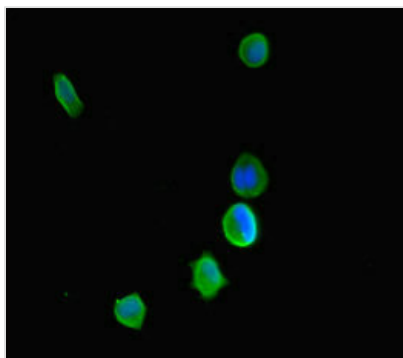




KDM5C Antibody

Product Code	CSB-PA011939HA01HU
Storage	Upon receipt, store at -20°C or -80°C. Avoid repeated freeze.
Uniprot No.	P41229
Immunogen	Recombinant Human Lysine-specific demethylase 5C protein (45-324AA)
Raised In	Rabbit
Species Reactivity	Human
Tested Applications	ELISA, IF; Recommended dilution: IF:1:50-1:200
Form	Liquid
Conjugate	Non-conjugated
Storage Buffer	Preservative: 0.03% Proclin 300 Constituents: 50% Glycerol, 0.01M PBS, PH 7.4
Purification Method	>95%, Protein G purified
Isotype	IgG
Clonality	Polyclonal
Alias	Lysine-specific demethylase 5C (EC 1.14.11.-) (Histone demethylase JARID1C) (Jumonji/ARID domain-containing protein 1C) (Protein SmcX) (Protein Xe169), KDM5C, DXS1272E JARID1C SMCX XE169
Immunogen Species	Homo sapiens (Human)
Research Area	Epigenetics and Nuclear Signaling
Target Names	KDM5C

Image



Immunofluorescent analysis of MCF-7 cells using CSB-PA011939HA01HU at dilution of 1:100 and Alexa Fluor 488-conjugated AffiniPure Goat Anti-Rabbit IgG(H+L)

Usage

For Research Use Only. Not for use in diagnostic or therapeutic procedures.