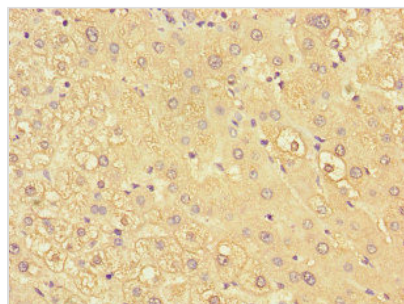




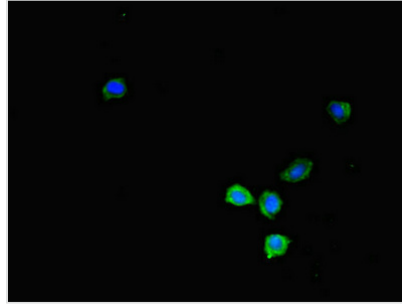
KIR2DL3 Antibody

Product Code	CSB-PA012354LA01HU
Storage	Upon receipt, store at -20°C or -80°C. Avoid repeated freeze.
Uniprot No.	P43628
Immunogen	Recombinant Human Killer cell immunoglobulin-like receptor 2DL3 protein (22-245AA)
Raised In	Rabbit
Species Reactivity	Human
Tested Applications	ELISA, IHC, IF; Recommended dilution: IHC:1:20-1:200, IF:1:50-1:200
Form	Liquid
Conjugate	Non-conjugated
Storage Buffer	Preservative: 0.03% Proclin 300 Constituents: 50% Glycerol, 0.01M PBS, PH 7.4
Purification Method	>95%, Protein G purified
Isotype	IgG
Clonality	Polyclonal
Alias	Killer cell immunoglobulin-like receptor 2DL3 (CD158 antigen-like family member B2) (KIR-023GB) (Killer inhibitory receptor cl 2-3) (MHC class I NK cell receptor) (NKAT2a) (NKAT2b) (Natural killer-associated transcript 2) (NKAT-2) (p58 natural killer cell receptor clone CL-6) (p58 NK receptor CL-6) (p58.2 MHC class-I-specific NK receptor) (CD antigen CD158b2), KIR2DL3, CD158B2 KIRCL23 NKAT2
Immunogen Species	Homo sapiens (Human)
Research Area	Immunology
Target Names	KIR2DL3

Image



Immunohistochemistry of paraffin-embedded human liver tissue using CSB-PA012354LA01HU at dilution of 1:100



Immunofluorescent analysis of HepG2 cells using CSB-PA012354LA01HU at dilution of 1:100 and Alexa Fluor 488-conjugated AffiniPure Goat Anti-Rabbit IgG(H+L)

Usage

For Research Use Only. Not for use in diagnostic or therapeutic procedures.