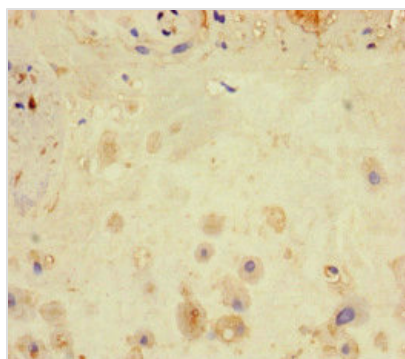




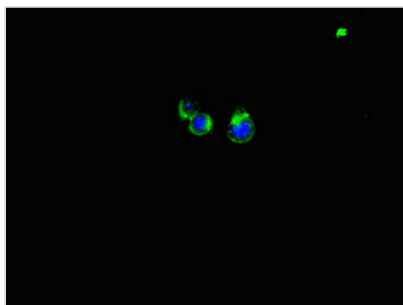
LATS1 Antibody

Product Code	CSB-PA012769LA01HU
Storage	Upon receipt, store at -20°C or -80°C. Avoid repeated freeze.
Uniprot No.	O95835
Immunogen	Recombinant Human Serine/threonine-protein kinase LATS1 protein (1-280AA)
Raised In	Rabbit
Species Reactivity	Human
Tested Applications	ELISA, IHC, IF, IP; Recommended dilution: IHC:1:100-1:1200, IF:1:50-1:500, IP:1:200-1:2000
Form	Liquid
Conjugate	Non-conjugated
Storage Buffer	Preservative: 0.03% Proclin 300 Constituents: 50% Glycerol, 0.01M PBS, PH 7.4
Purification Method	>95%, Protein G purified
Isotype	IgG
Clonality	Polyclonal
Alias	Serine/threonine-protein kinase LATS1 (EC 2.7.11.1) (Large tumor suppressor homolog 1) (WARTS protein kinase) (h-warts), LATS1, WARTS
Immunogen Species	Homo sapiens (Human)
Research Area	Cell Biology
Target Names	LATS1

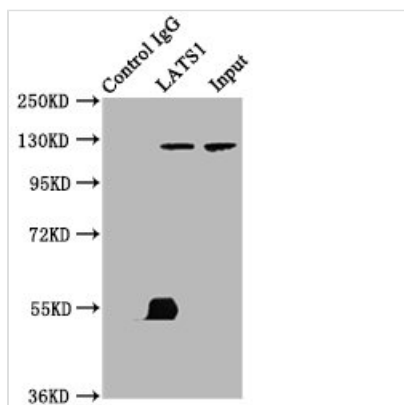
Image



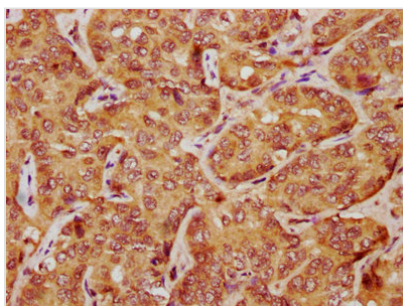
Immunohistochemistry of paraffin-embedded human placenta tissue using CSB-PA012769LA01HU at dilution of 1:100



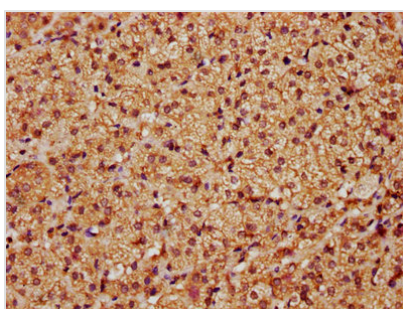
Immunofluorescent analysis of HeLa cells using CSB-PA012769LA01HU at dilution of 1:100 and Alexa Fluor 488-conjugated AffiniPure Goat Anti-Rabbit IgG(H+L)



Immunoprecipitating LATS1 in K562 whole cell lysate
 Lane 1: Rabbit control IgG (1μg) instead of CSB-PA012769LA01HU in K562 whole cell lysate. For western blotting, a HRP-conjugated Protein G antibody was used as the secondary antibody (1/2000)
 Lane 2: CSB-PA012769LA01HU (6μg) + K562 whole cell lysate (500μg)
 Lane 3: K562 whole cell lysate (10μg)



IHC image of CSB-PA012769LA01HU diluted at 1:1200 and staining in paraffin-embedded human liver cancer performed on a Leica Bond™ system. After dewaxing and hydration, antigen retrieval was mediated by high pressure in a citrate buffer (pH 6.0). Section was blocked with 10% normal goat serum 30min at RT. Then primary antibody (1% BSA) was incubated at 4°C overnight. The primary is detected by a biotinylated secondary antibody and visualized using an HRP conjugated SP system.



IHC image of CSB-PA012769LA01HU diluted at 1:1200 and staining in paraffin-embedded human adrenal gland tissue performed on a Leica Bond™ system. After dewaxing and hydration, antigen retrieval was mediated by high pressure in a citrate buffer (pH 6.0). Section was blocked with 10% normal goat serum 30min at RT. Then primary antibody (1% BSA) was incubated at 4°C overnight. The primary is detected by a biotinylated secondary antibody and visualized using an HRP conjugated SP system.

Usage

For Research Use Only. Not for use in diagnostic or therapeutic procedures.