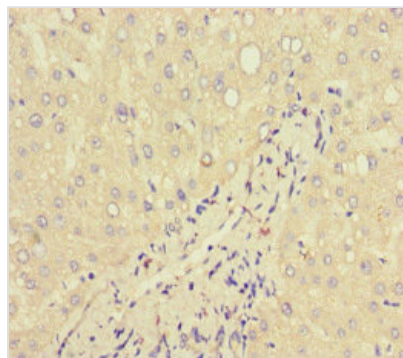




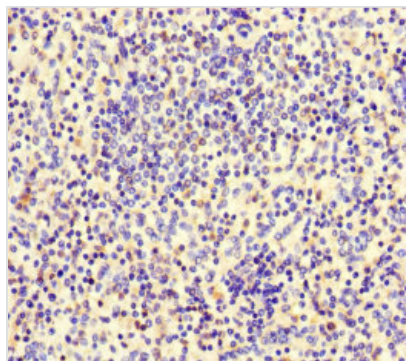
LTF Antibody

Product Code	CSB-PA013229LA01HU
Storage	Upon receipt, store at -20°C or -80°C. Avoid repeated freeze.
Uniprot No.	P02788
Immunogen	Recombinant Human Lactotransferrin protein (156-413AA)
Raised In	Rabbit
Species Reactivity	Human
Tested Applications	ELISA, IHC; Recommended dilution: IHC:1:20-1:200
Form	Liquid
Conjugate	Non-conjugated
Storage Buffer	Preservative: 0.03% Proclin 300 Constituents: 50% Glycerol, 0.01M PBS, PH 7.4
Purification Method	>95%, Protein G purified
Isotype	IgG
Clonality	Polyclonal
Alias	Lactotransferrin (Lactoferrin) (EC 3.4.21.-) (Growth-inhibiting protein 12) (Talalactoferrin) [Cleaved into: Lactoferricin-H (Lfcin-H); Kaliocin-1; Lactoferroxin-A; Lactoferroxin-B; Lactoferroxin-C], LTF, GIG12 LF
Immunogen Species	Homo sapiens (Human)
Research Area	Cardiovascular
Target Names	LTF

Image



Immunohistochemistry of paraffin-embedded human liver tissue using CSB-PA013229LA01HU at dilution of 1:100



Immunohistochemistry of paraffin-embedded human spleen tissue using CSB-PA013229LA01HU at dilution of 1:100

Usage

For Research Use Only. Not for use in diagnostic or therapeutic procedures.