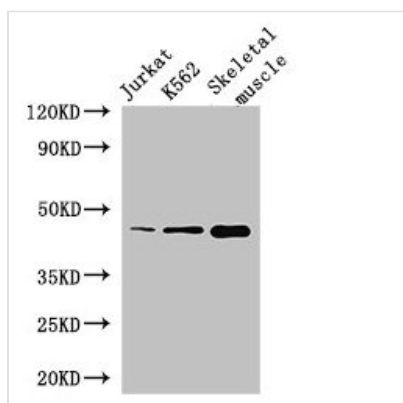




MEIS1 Antibody

Product Code	CSB-PA013686HA01HU
Storage	Upon receipt, store at -20°C or -80°C. Avoid repeated freeze.
Uniprot No.	O00470
Immunogen	Recombinant Human Homeobox protein Meis1 protein (1-90AA)
Raised In	Rabbit
Species Reactivity	Human, Mouse
Tested Applications	ELISA, WB, IHC, IP; Recommended dilution: WB:1:2000-1:10000, IHC:1:20-1:200, IP:1:200-1:2000
Form	Liquid
Conjugate	Non-conjugated
Storage Buffer	Preservative: 0.03% Proclin 300 Constituents: 50% Glycerol, 0.01M PBS, PH 7.4
Purification Method	>95%, Protein G purified
Isotype	IgG
Clonality	Polyclonal
Alias	Homeobox protein Meis1, MEIS1
Immunogen Species	Homo sapiens (Human)
Research Area	Epigenetics and Nuclear Signaling
Target Names	MEIS1

Image



Western Blot

Positive WB detected in: Jurkat whole cell lysate, K562 whole cell lysate, Mouse skeletal muscle tissue

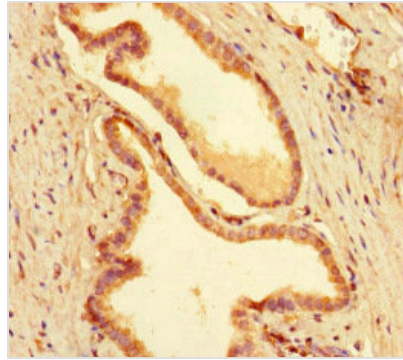
All lanes: MEIS1 antibody at 2.8µg/ml

Secondary

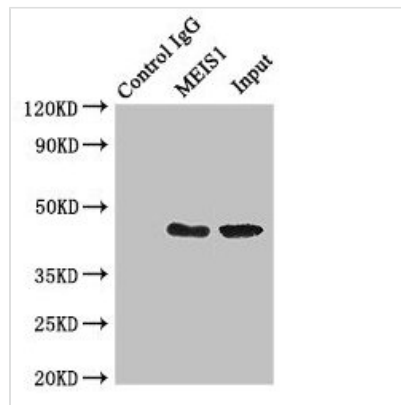
Goat polyclonal to rabbit IgG at 1/50000 dilution

Predicted band size: 44, 51 kDa

Observed band size: 44 kDa



Immunohistochemistry of paraffin-embedded human prostate cancer using CSB-PA013686HA01HU at dilution of 1:100



Immunoprecipitating MEIS1 in K562 whole cell lysate

Lane 1: Rabbit control IgG (1 μ g) instead of CSB-PA013686HA01HU in K562 whole cell lysate.

For western blotting, a HRP-conjugated Protein G antibody was used as the secondary antibody (1/50000)

Lane 2: CSB-PA013686HA01HU (4 μ g) + K562 whole cell lysate (500 μ g)

Lane 3: K562 whole cell lysate (20 μ g)

Usage

For Research Use Only. Not for use in diagnostic or therapeutic procedures.