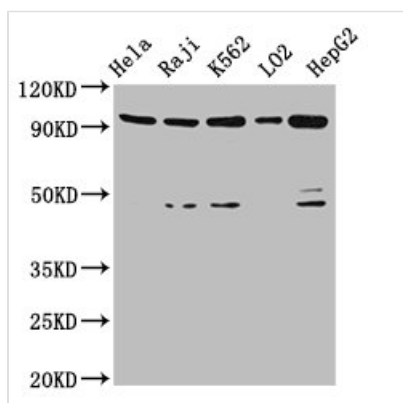




PROM1 Antibody

Product Code	CSB-PA018751LA01HU
Storage	Upon receipt, store at -20°C or -80°C. Avoid repeated freeze.
Uniprot No.	O43490
Immunogen	Recombinant Human Prominin-1 protein (508-792AA)
Raised In	Rabbit
Species Reactivity	Human
Tested Applications	ELISA, WB, IHC; Recommended dilution: WB:1:500-1:5000, IHC:1:1000-1:2000
Form	Liquid
Conjugate	Non-conjugated
Storage Buffer	Preservative: 0.03% Proclin 300 Constituents: 50% Glycerol, 0.01M PBS, PH 7.4
Purification Method	>95%, Protein G purified
Isotype	IgG
Clonality	Polyclonal
Alias	Prominin-1 (Antigen AC133) (Prominin-like protein 1) (CD antigen CD133), PROM1, PROML1
Immunogen Species	Homo sapiens (Human)
Research Area	Neuroscience
Target Names	PROM1

Image

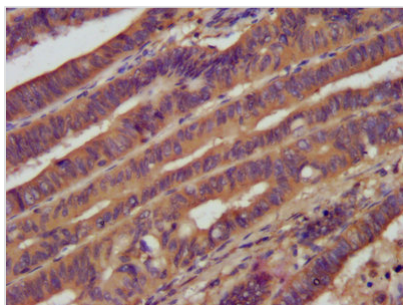


Western Blot

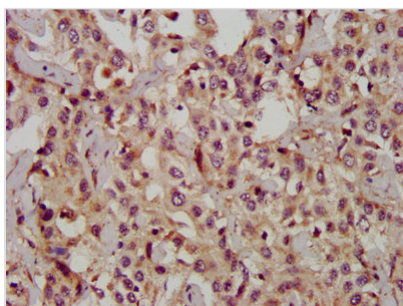
Positive WB detected in: HeLa whole cell lysate, Raji whole cell lysate, K562 whole cell lysate, LO2 whole cell lysate, HepG2 whole cell lysate
All lanes: PROM1 antibody at 4.8µg/ml

Secondary

Goat polyclonal to rabbit IgG at 1/50000 dilution
Predicted band size: 98, 97, 94, 93, 95 kDa
Observed band size: 98 kDa



IHC image of CSB-PA018751LA01HU diluted at 1:1200 and staining in paraffin-embedded human colon cancer performed on a Leica Bond™ system. After dewaxing and hydration, antigen retrieval was mediated by high pressure in a citrate buffer (pH 6.0). Section was blocked with 10% normal goat serum 30min at RT. Then primary antibody (1% BSA) was incubated at 4°C overnight. The primary is detected by a biotinylated secondary antibody and visualized using an HRP conjugated SP system.



IHC image of CSB-PA018751LA01HU diluted at 1:1200 and staining in paraffin-embedded human liver cancer performed on a Leica Bond™ system. After dewaxing and hydration, antigen retrieval was mediated by high pressure in a citrate buffer (pH 6.0). Section was blocked with 10% normal goat serum 30min at RT. Then primary antibody (1% BSA) was incubated at 4°C overnight. The primary is detected by a biotinylated secondary antibody and visualized using an HRP conjugated SP system.

Usage

For Research Use Only. Not for use in diagnostic or therapeutic procedures.