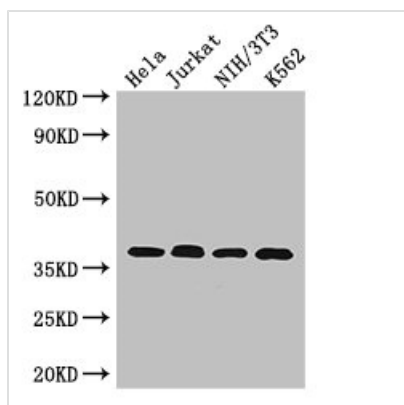




# RAD51 Antibody

<b>Product Code</b>	CSB-PA019268LA01HU
<b>Storage</b>	Upon receipt, store at -20°C or -80°C. Avoid repeated freeze.
<b>Uniprot No.</b>	Q06609
<b>Immunogen</b>	Recombinant Human DNA repair protein RAD51 homolog 1 protein (1-228AA)
<b>Raised In</b>	Rabbit
<b>Species Reactivity</b>	Human, Mouse
<b>Tested Applications</b>	ELISA, WB, IHC, IF, IP; Recommended dilution: WB:1:2000-1:5000, IHC:1:20-1:200, IF:1:50-1:200, IP:1:200-1:2000
<b>Form</b>	Liquid
<b>Conjugate</b>	Non-conjugated
<b>Storage Buffer</b>	Preservative: 0.03% Proclin 300 Constituents: 50% Glycerol, 0.01M PBS, PH 7.4
<b>Purification Method</b>	>95%, Protein G purified
<b>Isotype</b>	IgG
<b>Clonality</b>	Polyclonal
<b>Alias</b>	DNA repair protein RAD51 homolog 1 (HsRAD51) (hRAD51) (RAD51 homolog A), RAD51, RAD51A RECA
<b>Immunogen Species</b>	Homo sapiens (Human)
<b>Research Area</b>	Epigenetics and Nuclear Signaling
<b>Target Names</b>	RAD51

## Image



### Western Blot

Positive WB detected in: HeLa whole cell lysate, Jurkat whole cell lysate, NIH/3T3 whole cell lysate, K562 whole cell lysate

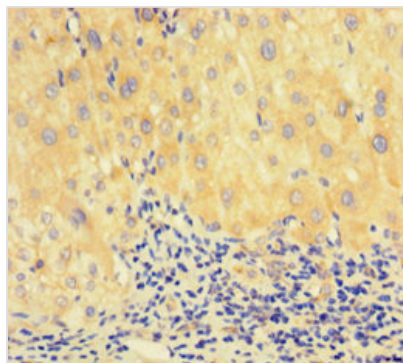
All lanes: RAD51 antibody at 2.7µg/ml

### Secondary

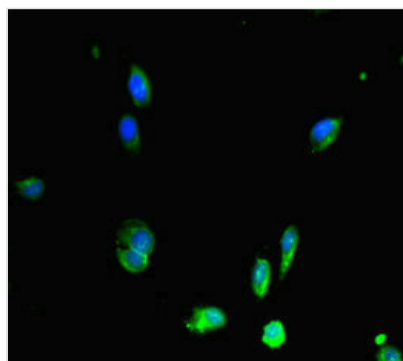
Goat polyclonal to rabbit IgG at 1/50000 dilution

Predicted band size: 37, 27, 32 kDa

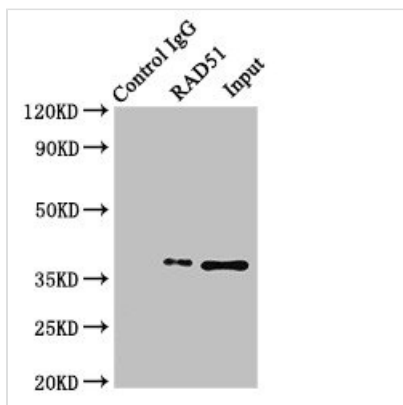
Observed band size: 37 kDa



Immunohistochemistry of paraffin-embedded human liver cancer using CSB-PA019268LA01HU at dilution of 1:100



Immunofluorescent analysis of HeLa cells using CSB-PA019268LA01HU at dilution of 1:100 and Alexa Fluor 488-conjugated AffiniPure Goat Anti-Rabbit IgG(H+L)



Immunoprecipitating RAD51 in K562 whole cell lysate  
 Lane 1: Rabbit control IgG (1μg) instead of CSB-PA019268LA01HU in K562 whole cell lysate. For western blotting, a HRP-conjugated Protein G antibody was used as the secondary antibody (1/50000)  
 Lane 2: CSB-PA019268LA01HU (4μg) + K562 whole cell lysate (500μg)  
 Lane 3: K562 whole cell lysate (20μg)