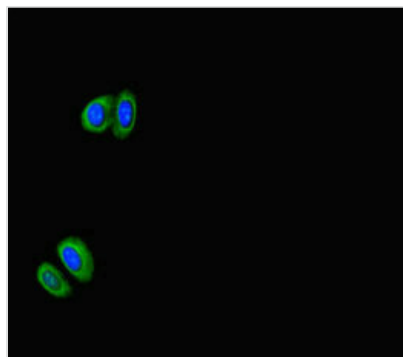




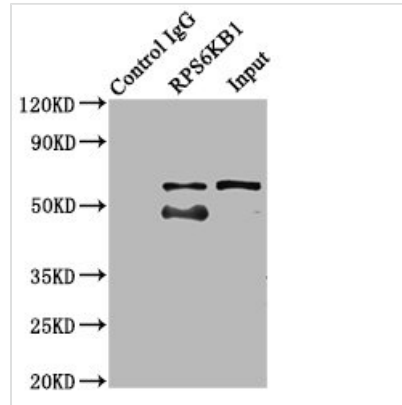
RPS6KB1 Antibody

Product Code	CSB-PA020470LA01HU
Storage	Upon receipt, store at -20°C or -80°C. Avoid repeated freeze.
Uniprot No.	P23443
Immunogen	Recombinant Human Ribosomal protein S6 kinase beta-1 protein (1-236AA)
Raised In	Rabbit
Species Reactivity	Human
Tested Applications	ELISA, IF, IP; Recommended dilution: IF:1:50-1:200, IP:1:200-1:2000
Form	Liquid
Conjugate	Non-conjugated
Storage Buffer	Preservative: 0.03% Proclin 300 Constituents: 50% Glycerol, 0.01M PBS, PH 7.4
Purification Method	>95%, Protein G purified
Isotype	IgG
Clonality	Polyclonal
Alias	Ribosomal protein S6 kinase beta-1 (S6K-beta-1) (S6K1) (EC 2.7.11.1) (70 kDa ribosomal protein S6 kinase 1) (P70S6K1) (p70-S6K 1) (Ribosomal protein S6 kinase I) (Serine/threonine-protein kinase 14A) (p70 ribosomal S6 kinase alpha) (p70 S6 kinase alpha) (p70 S6K-alpha) (p70 S6KA), RPS6KB1, STK14A
Immunogen Species	Homo sapiens (Human)
Research Area	Cell Biology
Target Names	RPS6KB1

Image



Immunofluorescent analysis of HepG2 cells using CSB-PA020470LA01HU at dilution of 1:100 and Alexa Fluor 488-conjugated AffiniPure Goat Anti-Rabbit IgG(H+L)



Immunoprecipitating RPS6KB1 in MCF-7 whole cell lysate

Lane 1: Rabbit control IgG (1 μ g) instead of CSB-PA020470LA01HU in MCF-7 whole cell lysate.

For western blotting, a HRP-conjugated Protein G antibody was used as the secondary antibody (1/2000)

Lane 2: CSB-PA020470LA01HU (6 μ g) + MCF-7 whole cell lysate (500 μ g)

Lane 3: MCF-7 whole cell lysate (10 μ g)

Usage

For Research Use Only. Not for use in diagnostic or therapeutic procedures.