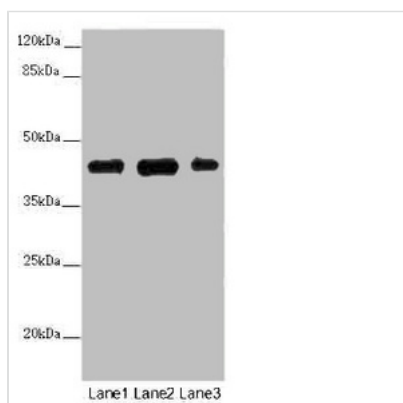




SS18L1 Antibody

Product Code	CSB-PA022701LA01HU
Storage	Upon receipt, store at -20°C or -80°C. Avoid repeated freeze.
Uniprot No.	O75177
Immunogen	Recombinant Human Calcium-responsive transactivator protein (47-396AA)
Raised In	Rabbit
Species Reactivity	Human, Mouse
Tested Applications	ELISA, WB, IHC; Recommended dilution: WB:1:1000-1:5000, IHC:1:20-1:200
Form	Liquid
Conjugate	Non-conjugated
Storage Buffer	Preservative: 0.03% Proclin 300 Constituents: 50% Glycerol, 0.01M PBS, PH 7.4
Purification Method	>95%, Protein G purified
Isotype	IgG
Clonality	Polyclonal
Alias	Calcium-responsive transactivator (SS18-like protein 1) (SYT homolog 1), SS18L1, CREST KIAA0693
Immunogen Species	Homo sapiens (Human)
Research Area	Others
Target Names	SS18L1

Image



Western blot

All lanes: SS18L1 antibody at 2 µg/ml

Lane 1: Mouse kidney tissue

Lane 2: Mouse lung tissue

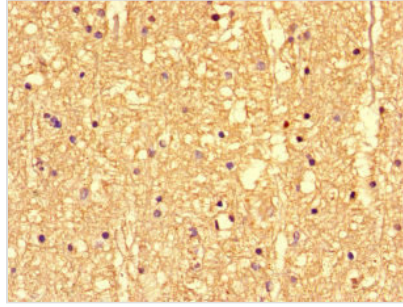
Lane 3: Mouse spleen tissue

Secondary

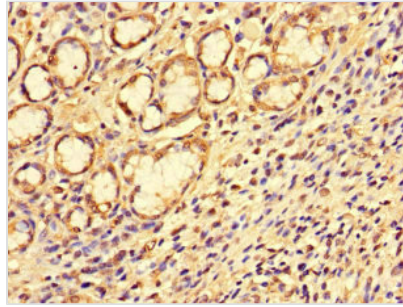
Goat polyclonal to rabbit IgG at 1/10000 dilution

Predicted band size: 43, 41, 34, 30, 44 kDa

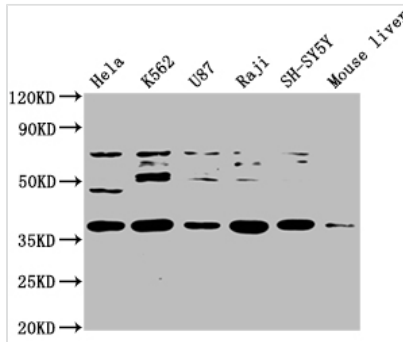
Observed band size: 43 kDa



Immunohistochemistry of paraffin-embedded human brain tissue using CSB-PA022701LA01HU at dilution of 1:100



Immunohistochemistry of paraffin-embedded human gastric cancer using CSB-PA022701LA01HU at dilution of 1:100



Western Blot

Positive WB detected in: HeLa whole cell lysate, K562 whole cell lysate, U87 whole cell lysate, Raji whole cell lysate, SH-SY5Y whole cell lysate, Mouse liver tissue

All lanes: SS18L1 antibody at 1:2000

Secondary

Goat polyclonal to rabbit IgG at 1/50000 dilution

Predicted band size: 43, 41, 34, 30, 44 kDa

Observed band size: 43 kDa

Usage

For Research Use Only. Not for use in diagnostic or therapeutic procedures.