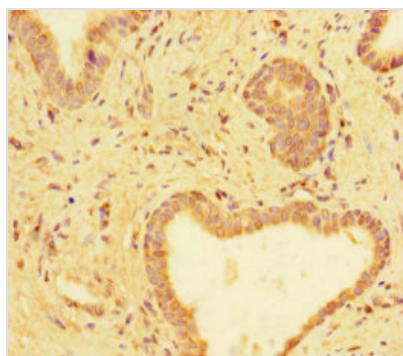




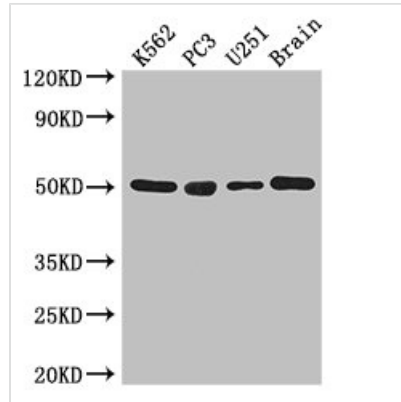
# TUBA1C Antibody

<b>Product Code</b>	CSB-PA025308HA01HU
<b>Storage</b>	Upon receipt, store at -20°C or -80°C. Avoid repeated freeze.
<b>Uniprot No.</b>	Q9BQE3
<b>Immunogen</b>	Recombinant Human Tubulin alpha-1C chain protein (29-184AA)
<b>Raised In</b>	Rabbit
<b>Species Reactivity</b>	Human, Mouse
<b>Tested Applications</b>	ELISA, WB, IHC, IP; Recommended dilution: WB:1:500-1:5000, IHC:1:20-1:200, IP:1:200-1:2000
<b>Form</b>	Liquid
<b>Conjugate</b>	Non-conjugated
<b>Storage Buffer</b>	Preservative: 0.03% Proclin 300 Constituents: 50% Glycerol, 0.01M PBS, PH 7.4
<b>Purification Method</b>	>95%, Protein G purified
<b>Isotype</b>	IgG
<b>Clonality</b>	Polyclonal
<b>Alias</b>	Tubulin alpha-1C chain (Alpha-tubulin 6) (Tubulin alpha-6 chain) [Cleaved into: Detyrosinated tubulin alpha-1C chain], TUBA1C, TUBA6
<b>Immunogen Species</b>	Homo sapiens (Human)
<b>Research Area</b>	Signal Transduction
<b>Target Names</b>	TUBA1C

## Image



Immunohistochemistry of paraffin-embedded human prostate cancer using CSB-PA025308HA01HU at dilution of 1:100


**Western Blot**

Positive WB detected in: K562 whole cell lysate, PC-3 whole cell lysate, U251 whole cell lysate, Mouse brain tissue

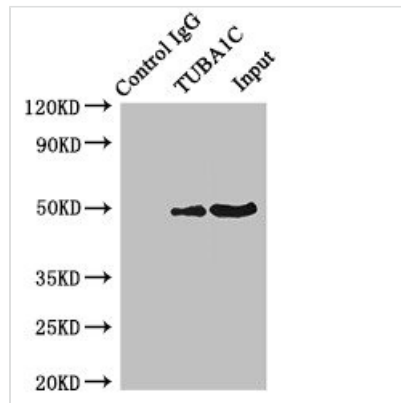
All lanes: TUBA1C antibody at 3 $\mu$ g/ml

Secondary

Goat polyclonal to rabbit IgG at 1/50000 dilution

Predicted band size: 50 kDa

Observed band size: 50 kDa



Immunoprecipitating TUBA1C in K562 whole cell lysate

Lane 1: Rabbit control IgG instead of CSB-PA025308HA01HU in K562 whole cell lysate.

For western blotting, a HRP-conjugated Protein G antibody was used as the secondary antibody (1/50000)

Lane 2: CSB-PA025308HA01HU (4 $\mu$ g) + K562 whole cell lysate (500 $\mu$ g)

Lane 3: K562 whole cell lysate (20 $\mu$ g)

**Usage**

For Research Use Only. Not for use in diagnostic or therapeutic procedures.