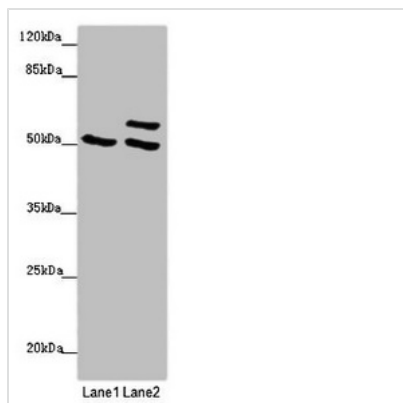




# TUBB4A Antibody

<b>Product Code</b>	CSB-PA025324LA01HU
<b>Storage</b>	Upon receipt, store at -20°C or -80°C. Avoid repeated freeze.
<b>Uniprot No.</b>	P04350
<b>Immunogen</b>	Recombinant Human Tubulin beta-4A chain protein (1-444AA)
<b>Raised In</b>	Rabbit
<b>Species Reactivity</b>	Human, Mouse
<b>Tested Applications</b>	ELISA, WB, IHC, IF; Recommended dilution: WB:1:500-1:5000, IHC:1:20-1:200, IF:1:50-1:200
<b>Form</b>	Liquid
<b>Conjugate</b>	Non-conjugated
<b>Storage Buffer</b>	Preservative: 0.03% Proclin 300 Constituents: 50% Glycerol, 0.01M PBS, PH 7.4
<b>Purification Method</b>	>95%, Protein G purified
<b>Isotype</b>	IgG
<b>Clonality</b>	Polyclonal
<b>Alias</b>	Tubulin beta-4A chain (Tubulin 5 beta) (Tubulin beta-4 chain), TUBB4A, TUBB4, TUBB5
<b>Immunogen Species</b>	Homo sapiens (Human)
<b>Research Area</b>	Tags & Cell Markers
<b>Target Names</b>	TUBB4A

## Image



### Western blot

All lanes: TUBB4A antibody at 2 µg/ml

Lane 1: 293T whole cell lysate

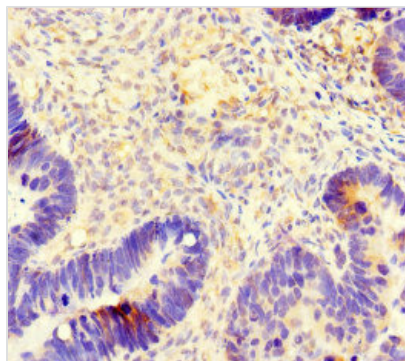
Lane 2: Hela whole cell lysate

Secondary

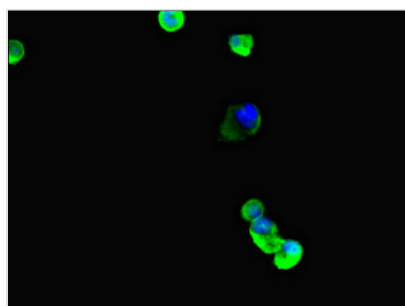
Goat polyclonal to rabbit IgG at 1/10000 dilution

Predicted band size: 50 kDa

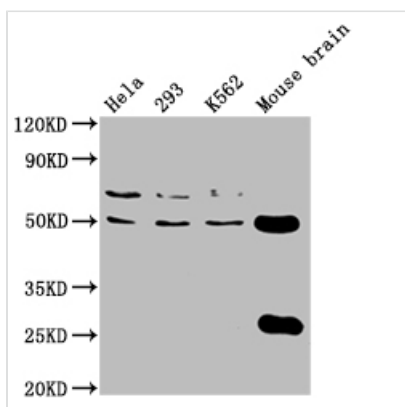
Observed band size: 50, 58 kDa



Immunohistochemistry of paraffin-embedded human ovarian cancer using CSB-PA025324LA01HU at dilution of 1:100



Immunofluorescent analysis of MCF-7 cells using CSB-PA025324LA01HU at dilution of 1:100 and Alexa Fluor 488-conjugated AffiniPure Goat Anti-Rabbit IgG(H+L)



Western Blot  
 Positive WB detected in: HeLa whole cell lysate, 293 whole cell lysate, K562 whole cell lysate, Mouse brain tissue  
 All lanes: TUBB4A antibody at 1:2000  
 Secondary  
 Goat polyclonal to rabbit IgG at 1/50000 dilution  
 Predicted band size: 50 kDa  
 Observed band size: 50 kDa

**Usage**

For Research Use Only. Not for use in diagnostic or therapeutic procedures.