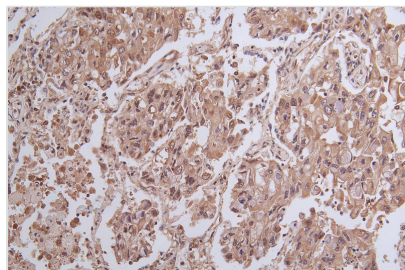




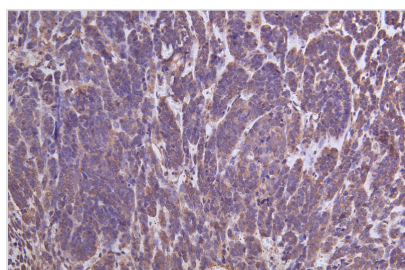
YWHAG Antibody

Product Code	CSB-PA026288LA01HU
Storage	Upon receipt, store at -20°C or -80°C. Avoid repeated freeze.
Uniprot No.	P61981
Immunogen	A synthesized peptide derived from human 14-3-3 gamma
Raised In	Rabbit
Species Reactivity	Human, Mouse, Rat
Tested Applications	ELISA, WB, IHC, IP; Recommended dilution: WB:1:500-1:5000, IHC:1:20-1:200, IP:1:200-1:2000
Form	Liquid
Conjugate	Non-conjugated
Storage Buffer	Rabbit IgG in 10mM phosphate buffered saline , pH 7.4, 150mM sodium chloride, 0.05% BSA, 0.02% sodium azide and 50% glycerol.
Purification Method	Affinity-chromatography
Isotype	IgG
Clonality	Polyclonal
Product Type	Polyclonal Antibody
Immunogen Species	Homo sapiens (Human)
Research Area	Neuroscience
Target Names	YWHAG

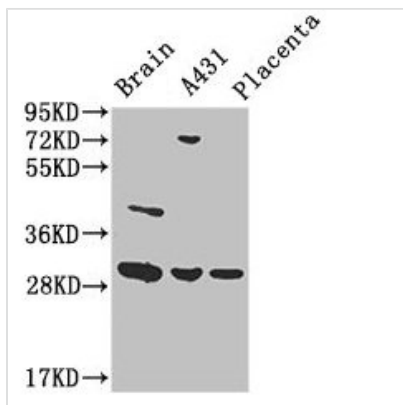
Image



Immunohistochemistry of paraffin-embedded human lung cancer using CSB-PA026288LA01HU at dilution of 1:100



Immunohistochemistry of paraffin-embedded human ovarian cancer using CSB-PA026288LA01HU at dilution of 1:100

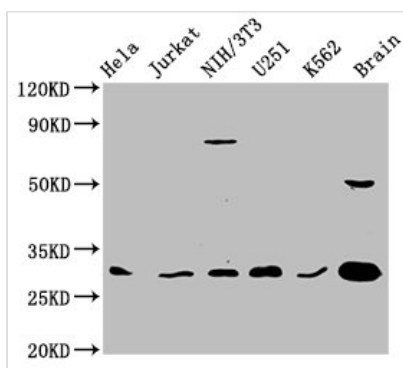


Western Blot

Positive WB detected in: Mouse brain tissue, A431 whole cell lysate, Human placenta tissue
All lanes: YWHAG antibody at 1:2000

Secondary

Goat polyclonal to rabbit IgG at 1/50000 dilution
Predicted band size: 29 kDa
Observed band size: 29 kDa



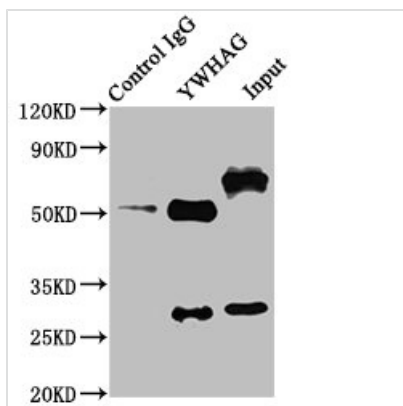
Western Blot

Positive WB detected in: HeLa whole cell lysate, Jurkat whole cell lysate, NIH/3T3 whole cell lysate, U251 whole cell lysate, K562 whole cell lysate, Rat brain tissue

All lanes: YWHAG antibody at 1:2000

Secondary

Goat polyclonal to rabbit IgG at 1/50000 dilution
Predicted band size: 29 kDa
Observed band size: 29 kDa

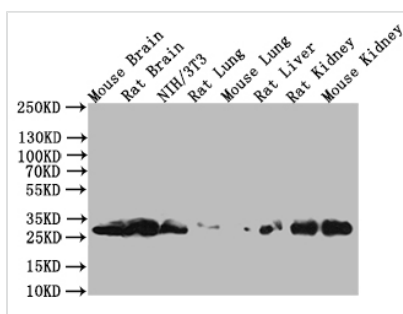


Immunoprecipitating YWHAG in NIH/3T3 whole cell lysate

Lane 1: Rabbit control IgG instead of CSB-PA026288LA01HU in NIH/3T3 whole cell lysate. For western blotting, a HRP-conjugated Protein G antibody was used as the secondary antibody (1/2000)

Lane 2: CSB-PA026288LA01HU (5µg) + NIH/3T3 whole cell lysate (500µg)

Lane 3: NIH/3T3 whole cell lysate (20µg)



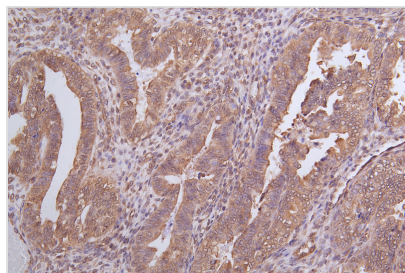
Western Blot

Positive WB detected in: Mouse Brain tissue lysate, Rat Brain tissue lysate, NIH/3T3 whole cell lysate, Rat Lung tissue lysate, Mouse Lung tissue lysate, Rat Liver tissue lysate, Rat Kidney tissue lysate, Mouse Kidney tissue lysate

All lanes: YWHAG antibody at 1:1000

Secondary

Goat polyclonal to rabbit IgG at 1/50000 dilution
Predicted band size: 28.3 kDa
Observed band size: 28kDa



Immunohistochemistry of paraffin-embedded human endometrial cancer using CSB-PA026288LA01HU at dilution of 1:100

Usage

For Research Use Only. Not for use in diagnostic or therapeutic procedures.