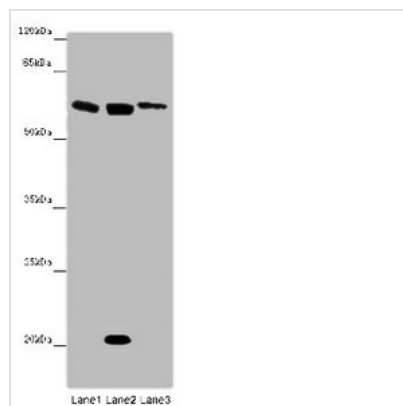




# SRF Antibody

|                            |                                                                                  |
|----------------------------|----------------------------------------------------------------------------------|
| <b>Product Code</b>        | CSB-PA02857A0Rb                                                                  |
| <b>Storage</b>             | Upon receipt, store at -20°C or -80°C. Avoid repeated freeze.                    |
| <b>Uniprot No.</b>         | P11831                                                                           |
| <b>Immunogen</b>           | Recombinant Human Serum response factor protein (57-269AA)                       |
| <b>Raised In</b>           | Rabbit                                                                           |
| <b>Species Reactivity</b>  | Human, Mouse                                                                     |
| <b>Tested Applications</b> | ELISA, WB, IHC; Recommended dilution: WB:1:1000-1:5000, IHC:1:20-1:200           |
| <b>Form</b>                | Liquid                                                                           |
| <b>Conjugate</b>           | Non-conjugated                                                                   |
| <b>Storage Buffer</b>      | Preservative: 0.03% Proclin 300<br>Constituents: 50% Glycerol, 0.01M PBS, PH 7.4 |
| <b>Purification Method</b> | >95%, Protein G purified                                                         |
| <b>Isotype</b>             | IgG                                                                              |
| <b>Clonality</b>           | Polyclonal                                                                       |
| <b>Alias</b>               | Serum response factor (SRF), SRF                                                 |
| <b>Immunogen Species</b>   | Homo sapiens (Human)                                                             |
| <b>Research Area</b>       | Epigenetics and Nuclear Signaling                                                |
| <b>Target Names</b>        | SRF                                                                              |

## Image



### Western blot

All lanes: SRF antibody at 12 µg/ml

Lane 1: Mouse heart tissue

Lane 2: NIH/3T3 whole cell lysate

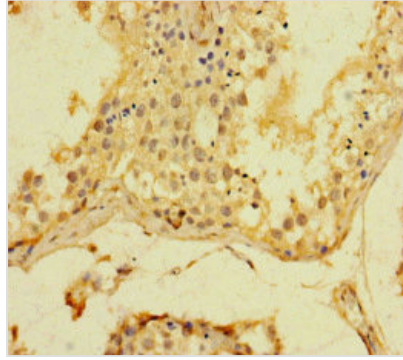
Lane 3: MCF-7 whole cell lysate

Secondary

Goat polyclonal to rabbit IgG at 1/10000 dilution

Predicted band size: 52 kDa

Observed band size: 62, 21 kDa



Immunohistochemistry of paraffin-embedded human testis tissue using CSB-PA02857A0Rb at dilution of 1:100

---

**Usage**

For Research Use Only. Not for use in diagnostic or therapeutic procedures.