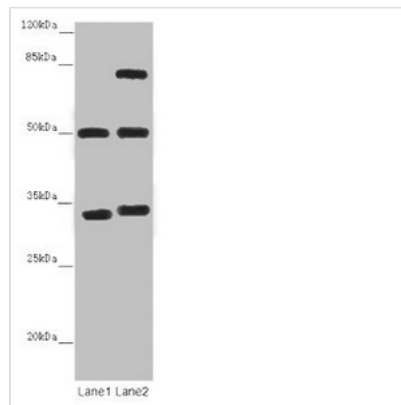




# TUBA1B Antibody

<b>Product Code</b>	CSB-PA04189A0Rb
<b>Storage</b>	Upon receipt, store at -20°C or -80°C. Avoid repeated freeze.
<b>Uniprot No.</b>	P68363
<b>Immunogen</b>	Recombinant Human Tubulin alpha-1B chain protein (29-310AA)
<b>Raised In</b>	Rabbit
<b>Species Reactivity</b>	Human, Mouse
<b>Tested Applications</b>	ELISA, WB, IHC, IF; Recommended dilution: WB:1:1000-1:5000, IHC:1:20-1:200, IF:1:50-1:200
<b>Form</b>	Liquid
<b>Conjugate</b>	Non-conjugated
<b>Storage Buffer</b>	Preservative: 0.03% Proclin 300 Constituents: 50% Glycerol, 0.01M PBS, PH 7.4
<b>Purification Method</b>	>95%, Protein G purified
<b>Isotype</b>	IgG
<b>Clonality</b>	Polyclonal
<b>Alias</b>	Tubulin alpha-1B chain (Alpha-tubulin ubiquitous) (Tubulin K-alpha-1) (Tubulin alpha-ubiquitous chain) [Cleaved into: Detyrosinated tubulin alpha-1B chain], TUBA1B
<b>Immunogen Species</b>	Homo sapiens (Human)
<b>Research Area</b>	Signal Transduction
<b>Target Names</b>	TUBA1B

## Image



### Western blot

All lanes: TUBA1B antibody at 12 µg/ml

Lane 1: Mouse brain tissue

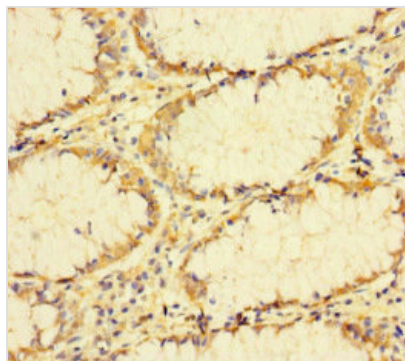
Lane 2: Mouse liver tissue

Secondary

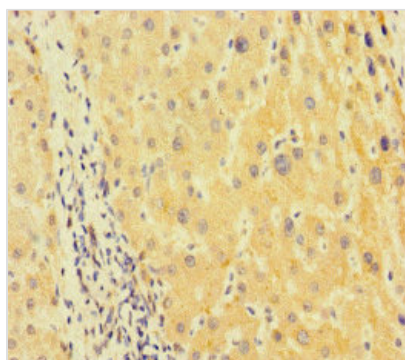
Goat polyclonal to rabbit IgG at 1/10000 dilution

Predicted band size: 51, 38 kDa

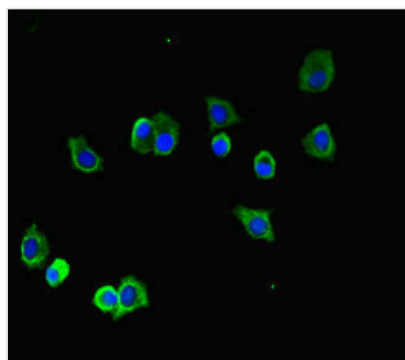
Observed band size: 51, 34, 75 kDa



Immunohistochemistry of paraffin-embedded human colon cancer using CSB-PA04189A0Rb at dilution of 1:100



Immunohistochemistry of paraffin-embedded human liver cancer using CSB-PA04189A0Rb at dilution of 1:100



Immunofluorescent analysis of HepG2 cells using CSB-PA04189A0Rb at dilution of 1:100 and Alexa Fluor 488-conjugated AffiniPure Goat Anti-Rabbit IgG(H+L)

**Usage**

For Research Use Only. Not for use in diagnostic or therapeutic procedures.