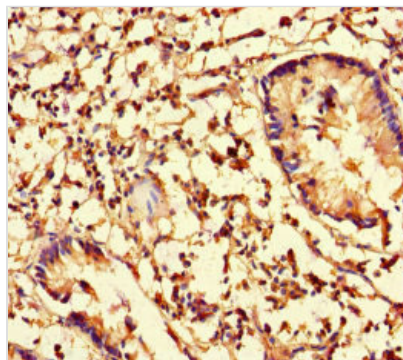




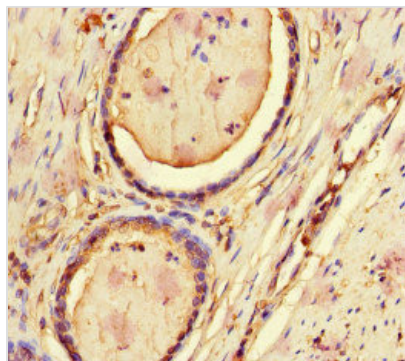
CFL1 Antibody

Product Code	CSB-PA04709A0Rb
Storage	Upon receipt, store at -20°C or -80°C. Avoid repeated freeze.
Uniprot No.	P23528
Immunogen	Recombinant Human Cofilin-1 protein (4-144AA)
Raised In	Rabbit
Species Reactivity	Human
Tested Applications	ELISA, IHC, IF; Recommended dilution: IHC:1:20-1:200, IF:1:50-1:200
Form	Liquid
Conjugate	Non-conjugated
Storage Buffer	Preservative: 0.03% Proclin 300 Constituents: 50% Glycerol, 0.01M PBS, PH 7.4
Purification Method	>95%, Protein G purified
Isotype	IgG
Clonality	Polyclonal
Alias	Cofilin-1 (18 kDa phosphoprotein) (p18) (Cofilin, non-muscle isoform), CFL1, CFL
Immunogen Species	Homo sapiens (Human)
Research Area	Signal Transduction
Target Names	CFL1

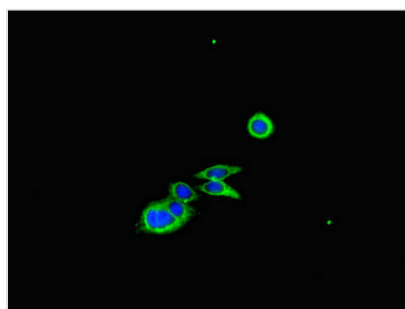
Image



Immunohistochemistry of paraffin-embedded human appendix tissue using CSB-PA04709A0Rb at dilution of 1:100



Immunohistochemistry of paraffin-embedded human prostate cancer using CSB-PA04709A0Rb at dilution of 1:100



Immunofluorescent analysis of HepG2 cells using CSB-PA04709A0Rb at dilution of 1:100 and Alexa Fluor 488-conjugated AffiniPure Goat Anti-Rabbit IgG(H+L)