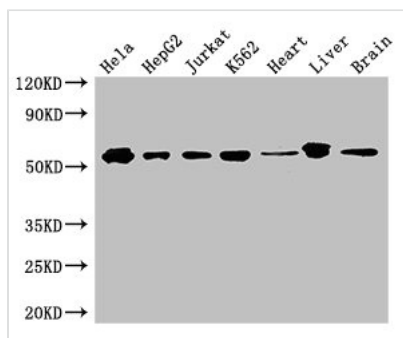




# SMAD2 Antibody

<b>Product Code</b>	CSB-PA15557A0Rb
<b>Storage</b>	Upon receipt, store at -20°C or -80°C. Avoid repeated freeze.
<b>Uniprot No.</b>	Q15796
<b>Immunogen</b>	Recombinant Human Mothers against decapentaplegic homolog 2 protein (2-467AA)
<b>Raised In</b>	Rabbit
<b>Species Reactivity</b>	Human, Mouse
<b>Tested Applications</b>	ELISA, WB, IHC, IF; Recommended dilution: WB:1:500-1:5000, IHC:1:100-1:1000, IF:1:50-1:500
<b>Form</b>	Liquid
<b>Conjugate</b>	Non-conjugated
<b>Storage Buffer</b>	Preservative: 0.03% Proclin 300 Constituents: 50% Glycerol, 0.01M PBS, PH 7.4
<b>Purification Method</b>	>95%, Protein G purified
<b>Isotype</b>	IgG
<b>Clonality</b>	Polyclonal
<b>Alias</b>	Mothers against decapentaplegic homolog 2 (MAD homolog 2) (Mothers against DPP homolog 2) (JV18-1) (Mad-related protein 2) (hMAD-2) (SMAD family member 2) (SMAD 2) (Smad2) (hSMAD2), SMAD2, MADH2 MADR2
<b>Immunogen Species</b>	Homo sapiens (Human)
<b>Research Area</b>	Signal Transduction
<b>Target Names</b>	SMAD2

## Image

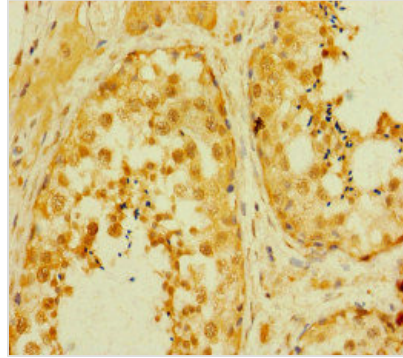


### Western Blot

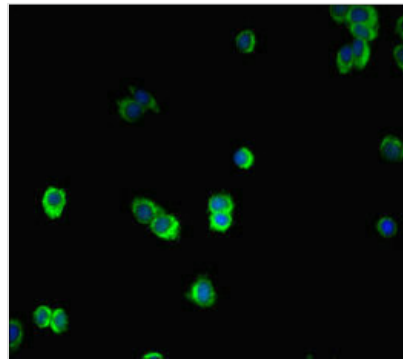
Positive WB detected in: HeLa whole cell lysate, HepG2 whole cell lysate, Jurkat whole cell lysate, K562 whole cell lysate, Mouse heart tissue, Mouse liver tissue, Mouse brain tissue  
All lanes: SMAD2 antibody at 3µg/ml

### Secondary

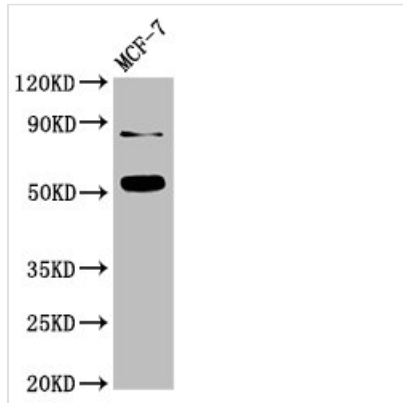
Goat polyclonal to rabbit IgG at 1/50000 dilution  
Predicted band size: 53, 49 kDa  
Observed band size: 53 kDa



Immunohistochemistry of paraffin-embedded human testis tissue using CSB-PA15557A0Rb at dilution of 1:100



Immunofluorescent analysis of HepG2 cells using CSB-PA15557A0Rb at dilution of 1:100 and Alexa Fluor 488-conjugated AffiniPure Goat Anti-Rabbit IgG(H+L)



Western Blot

Positive WB detected in: MCF-7 whole cell lysate

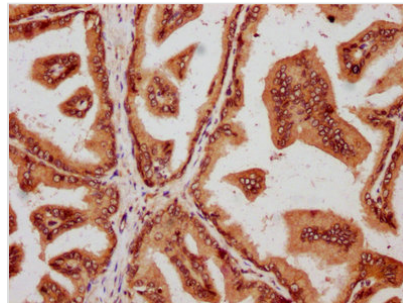
All lanes: SMAD2 antibody at 3µg/ml

Secondary

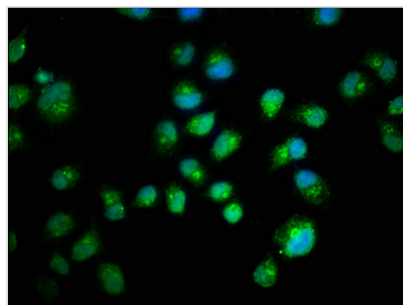
Goat polyclonal to rabbit IgG at 1/50000 dilution

Predicted band size: 53, 49 kDa

Observed band size: 53 kDa



IHC image of CSB-PA15557A0Rb diluted at 1:600 and staining in paraffin-embedded human prostate tissue performed on a Leica Bond™ system. After dewaxing and hydration, antigen retrieval was mediated by high pressure in a citrate buffer (pH 6.0). Section was blocked with 10% normal goat serum 30min at RT. Then primary antibody (1% BSA) was incubated at 4°C overnight. The primary is detected by a biotinylated secondary antibody and visualized using an HRP conjugated SP system.



Immunofluorescence staining of HeLa cells with CSB-PA15557A0Rb at 1:200, counter-stained with DAPI. The cells were fixed in 4% formaldehyde, permeabilized using 0.2% Triton X-100 and blocked in 10% normal Goat Serum. The cells were then incubated with the antibody overnight at 4°C. The secondary antibody was Alexa Fluor 488-conjugated AffiniPure Goat Anti-Rabbit IgG(H+L).

---

**Usage**

For Research Use Only. Not for use in diagnostic or therapeutic procedures.