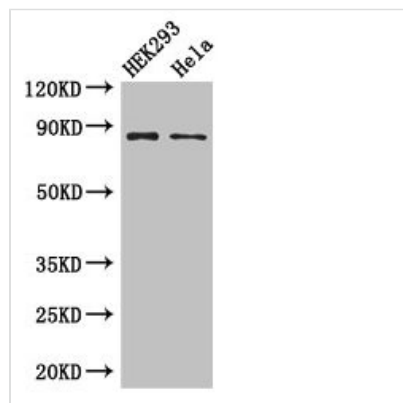




MLH1 Antibody

Product Code	CSB-PA17009A0Rb
Storage	Upon receipt, store at -20°C or -80°C. Avoid repeated freeze.
Uniprot No.	P40692
Immunogen	Recombinant Human DNA mismatch repair protein Mlh1 protein (350-519AA)
Raised In	Rabbit
Species Reactivity	Human
Tested Applications	ELISA, WB, IHC, IF; Recommended dilution: WB:1:500-1:5000, IHC:1:20-1:200, IF:1:50-1:200
Form	Liquid
Conjugate	Non-conjugated
Storage Buffer	Preservative: 0.03% Proclin 300 Constituents: 50% Glycerol, 0.01M PBS, PH 7.4
Purification Method	>95%, Protein G purified
Isotype	IgG
Clonality	Polyclonal
Alias	DNA mismatch repair protein Mlh1 (MutL protein homolog 1), MLH1, COCA2
Immunogen Species	Homo sapiens (Human)
Research Area	Epigenetics and Nuclear Signaling
Target Names	MLH1

Image



Western Blot

Positive WB detected in: HEK293 whole cell lysate, HeLa whole cell lysate

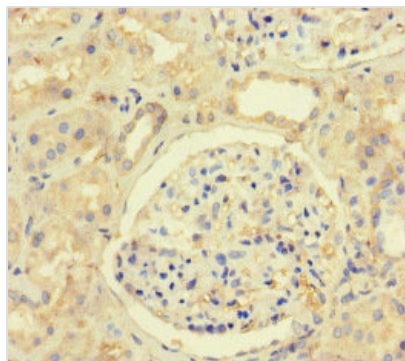
All lanes: MLH1 antibody at 3µg/ml

Secondary

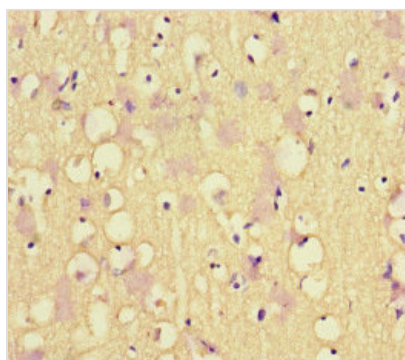
Goat polyclonal to rabbit IgG at 1/50000 dilution

Predicted band size: 85, 59, 74 kDa

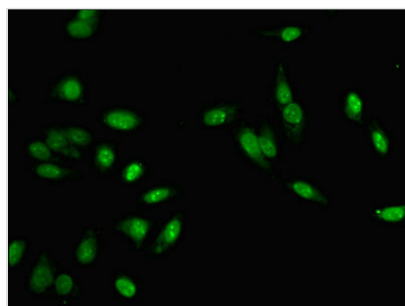
Observed band size: 85 kDa



Immunohistochemistry of paraffin-embedded human kidney tissue using CSB-PA17009A0Rb at dilution of 1:100



Immunohistochemistry of paraffin-embedded human brain tissue using CSB-PA17009A0Rb at dilution of 1:100



Immunofluorescent analysis of Hela cells using CSB-PA17009A0Rb at dilution of 1:100 and Alexa Fluor 488-conjugated AffiniPure Goat Anti-Rabbit IgG(H+L)

Usage

For Research Use Only. Not for use in diagnostic or therapeutic procedures.