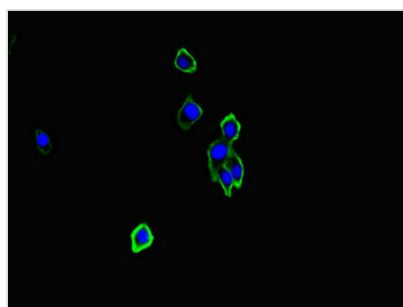




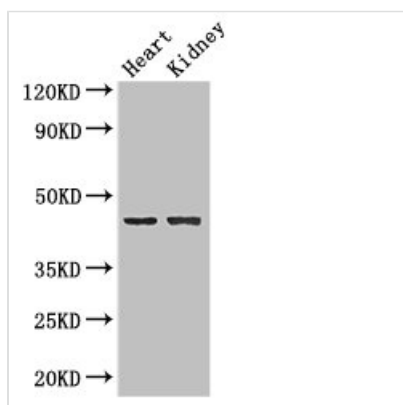
# NRXN1 Antibody

<b>Product Code</b>	CSB-PA347832LA01HU
<b>Storage</b>	Upon receipt, store at -20°C or -80°C. Avoid repeated freeze.
<b>Uniprot No.</b>	P58400
<b>Immunogen</b>	Recombinant Human Neurexin-1-beta protein (184-363AA)
<b>Raised In</b>	Rabbit
<b>Species Reactivity</b>	Human, Mouse
<b>Tested Applications</b>	ELISA, WB, IF; Recommended dilution: WB:1:2000-1:5000, IF:1:50-1:200
<b>Form</b>	Liquid
<b>Conjugate</b>	Non-conjugated
<b>Storage Buffer</b>	Preservative: 0.03% Proclin 300 Constituents: 50% Glycerol, 0.01M PBS, PH 7.4
<b>Purification Method</b>	>95%, Protein G purified
<b>Isotype</b>	IgG
<b>Clonality</b>	Polyclonal
<b>Alias</b>	NRXN1 antibody; Neurexin-1-beta antibody; Neurexin I-beta antibody
<b>Immunogen Species</b>	Homo sapiens (Human)
<b>Research Area</b>	Others
<b>Target Names</b>	NRXN1

## Image



Immunofluorescent analysis of HepG2 cells using CSB-PA347832LA01HU at dilution of 1:100 and Alexa Fluor 488-conjugated AffiniPure Goat Anti-Rabbit IgG(H+L)



### Western Blot

Positive WB detected in: Mouse heart tissue, Mouse kidney tissue

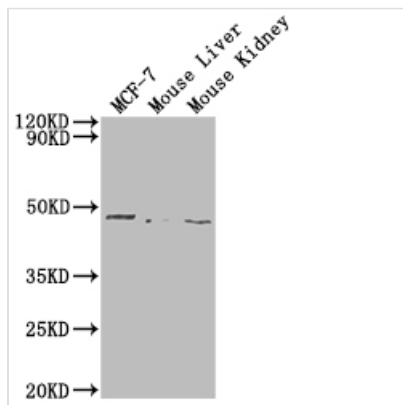
All lanes: NRXN1 antibody at 2µg/ml

Secondary

Goat polyclonal to rabbit IgG at 1/50000 dilution

Predicted band size: 47, 51, 162, 165, 170, 16 kDa

Observed band size: 47 kDa

**Western Blot**

Positive WB detected in: MCF-7 whole cell lysate, Mouse Liver tissue, Mouse Kidney tissue

All lanes: NRXN1 antibody at 1:2000

**Secondary**

Goat polyclonal to rabbit IgG at 1/50000 dilution

Predicted band size: 47 kDa

Observed band size: 47 kDa

**Usage**

For Research Use Only. Not for use in diagnostic or therapeutic procedures.