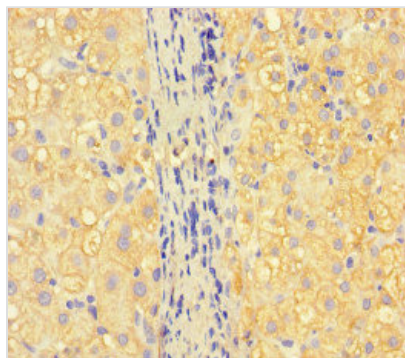




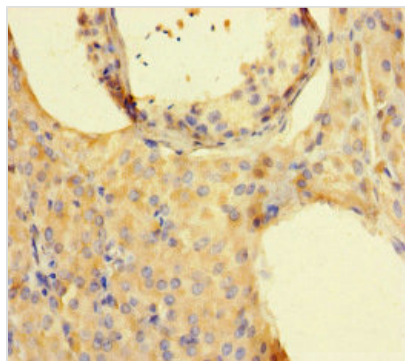
ISPD Antibody

| | |
|----------------------------|--|
| Product Code | CSB-PA388827LA01HU |
| Storage | Upon receipt, store at -20°C or -80°C. Avoid repeated freeze. |
| Uniprot No. | A4D126 |
| Immunogen | Recombinant Human Isoprenoid synthase domain-containing protein (1-264AA) |
| Raised In | Rabbit |
| Species Reactivity | Human |
| Tested Applications | ELISA, IHC, IF; Recommended dilution: IHC:1:20-1:200, IF:1:50-1:200 |
| Form | Liquid |
| Conjugate | Non-conjugated |
| Storage Buffer | Preservative: 0.03% Proclin 300 Constituents: 50% Glycerol, 0.01M PBS, PH 7.4 |
| Purification Method | >95%, Protein G purified |
| Isotype | IgG |
| Clonality | Polyclonal |
| Alias | D-ribitol-5-phosphate cytidyltransferase (EC 2.7.7.40) (2-C-methyl-D-erythritol 4-phosphate cytidyltransferase-like protein) (Isoprenoid synthase domain-containing protein) (hISPD), ISPD |
| Immunogen Species | Homo sapiens (Human) |
| Research Area | Others |
| Target Names | ISPD |

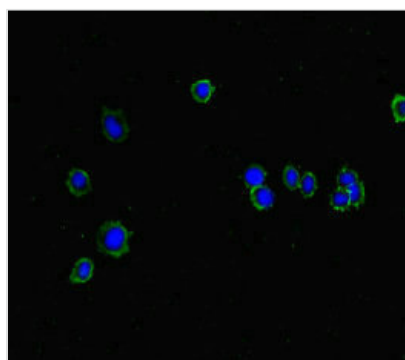
Image



Immunohistochemistry of paraffin-embedded human liver cancer using CSB-PA388827LA01HU at dilution of 1:100



Immunohistochemistry of paraffin-embedded human testis tissue using CSB-PA388827LA01HU at dilution of 1:100



Immunofluorescent analysis of HepG2 cells using CSB-PA388827LA01HU at dilution of 1:100 and Alexa Fluor 488-conjugated AffiniPure Goat Anti-Rabbit IgG(H+L)

Usage

For Research Use Only. Not for use in diagnostic or therapeutic procedures.