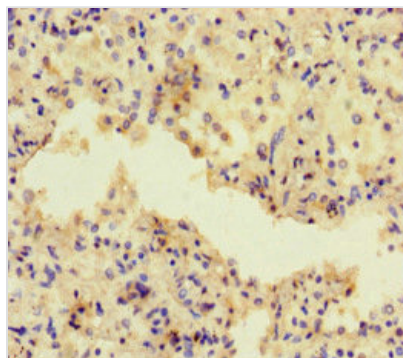




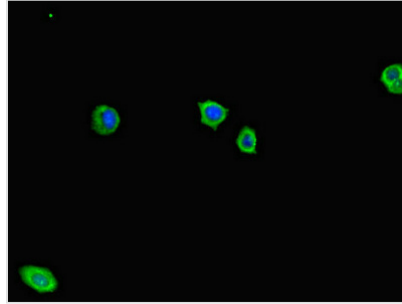
ADCY1 Antibody

Product Code	CSB-PA600142LA01HU
Storage	Upon receipt, store at -20°C or -80°C. Avoid repeated freeze.
Uniprot No.	Q08828
Immunogen	Recombinant Human Adenylate cyclase type 1 protein (416-610AA)
Raised In	Rabbit
Species Reactivity	Human
Tested Applications	ELISA, IHC, IF; Recommended dilution: IHC:1:20-1:200, IF:1:50-1:200
Form	Liquid
Conjugate	Non-conjugated
Storage Buffer	Preservative: 0.03% Proclin 300 Constituents: 50% Glycerol, 0.01M PBS, PH 7.4
Purification Method	>95%, Protein G purified
Isotype	IgG
Clonality	Polyclonal
Alias	Adenylate cyclase type 1 (EC 4.6.1.1) (ATP pyrophosphate-lyase 1) (Adenylate cyclase type I) (Adenylyl cyclase 1) (Ca(2+)/calmodulin-activated adenylyl cyclase), ADCY1
Immunogen Species	Homo sapiens (Human)
Research Area	Signal Transduction
Target Names	ADCY1

Image



Immunohistochemistry of paraffin-embedded human lung cancer using CSB-PA600142LA01HU at dilution of 1:100



Immunofluorescent analysis of HepG2 cells using CSB-PA600142LA01HU at dilution of 1:100 and Alexa Fluor 488-conjugated AffiniPure Goat Anti-Rabbit IgG(H+L)

Usage

For Research Use Only. Not for use in diagnostic or therapeutic procedures.