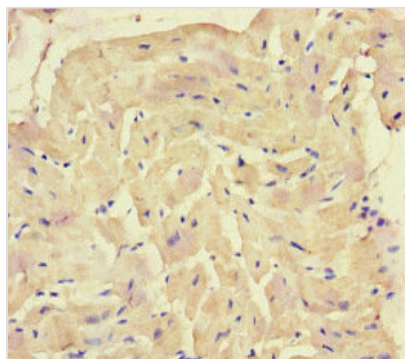




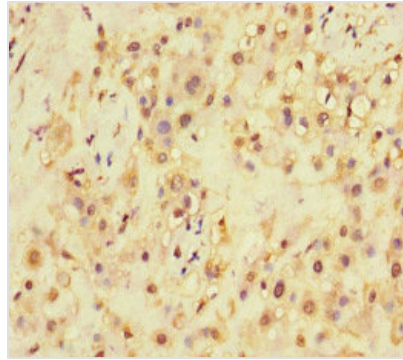
# SQSTM1 Antibody

<b>Product Code</b>	CSB-PA615696LA01HU
<b>Storage</b>	Upon receipt, store at -20°C or -80°C. Avoid repeated freeze.
<b>Uniprot No.</b>	Q13501
<b>Immunogen</b>	Recombinant Human Sequestosome-1 protein (16-310AA)
<b>Raised In</b>	Rabbit
<b>Species Reactivity</b>	Human
<b>Tested Applications</b>	ELISA, IHC, IF, IP; Recommended dilution: IHC:1:20-1:200, IF:1:50-1:500, IP:1:200-1:2000
<b>Form</b>	Liquid
<b>Conjugate</b>	Non-conjugated
<b>Storage Buffer</b>	Preservative: 0.03% Proclin 300 Constituents: 50% Glycerol, 0.01M PBS, PH 7.4
<b>Purification Method</b>	>95%, Protein G purified
<b>Isotype</b>	IgG
<b>Clonality</b>	Polyclonal
<b>Alias</b>	Sequestosome-1 (EBI3-associated protein of 60 kDa) (EBIAP) (p60) (Phosphotyrosine-independent ligand for the Lck SH2 domain of 62 kDa) (Ubiquitin-binding protein p62), SQSTM1, ORCA OSIL
<b>Immunogen Species</b>	Homo sapiens (Human)
<b>Research Area</b>	Signal Transduction
<b>Target Names</b>	SQSTM1

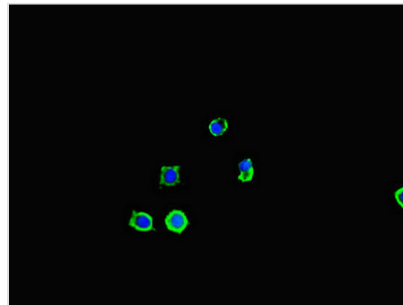
## Image



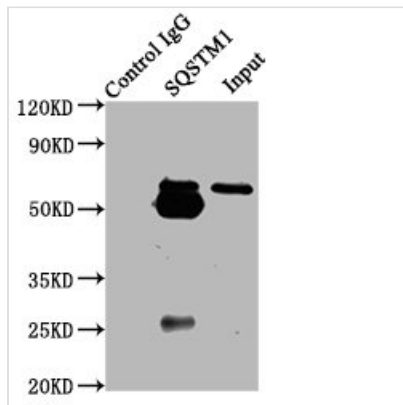
Immunohistochemistry of paraffin-embedded human heart tissue using CSB-PA615696LA01HU at dilution of 1:100



Immunohistochemistry of paraffin-embedded human placenta tissue using CSB-PA615696LA01HU at dilution of 1:100



Immunofluorescent analysis of MCF-7 cells using CSB-PA615696LA01HU at dilution of 1:100 and Alexa Fluor 488-conjugated AffiniPure Goat Anti-Rabbit IgG(H+L)



Immunoprecipitating SQSTM1 in HeLa whole cell lysate

Lane 1: Rabbit control IgG (1 $\mu$ g) instead of CSB-PA615696LA01HU in HeLa whole cell lysate. For western blotting, a HRP-conjugated Protein G antibody was used as the secondary antibody (1/2000)

Lane 2: CSB-PA615696LA01HU (6 $\mu$ g) + HeLa whole cell lysate (500 $\mu$ g)

Lane 3: HeLa whole cell lysate (10 $\mu$ g)

## Usage

For Research Use Only. Not for use in diagnostic or therapeutic procedures.