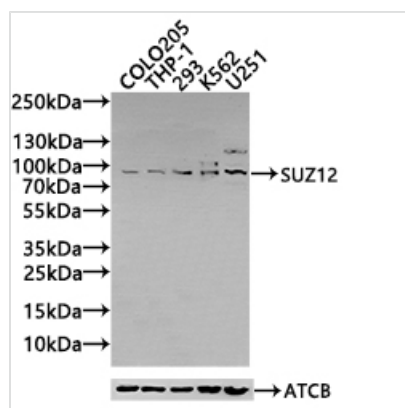




# SUZ12 Antibody

<b>Product Code</b>	CSB-PA621859LA01HU
<b>Storage</b>	Upon receipt, store at -20°C or -80°C. Avoid repeated freeze.
<b>Uniprot No.</b>	Q15022
<b>Immunogen</b>	Recombinant Human Polycomb protein SUZ12 protein (131-305AA)
<b>Raised In</b>	Rabbit
<b>Species Reactivity</b>	Human, Mouse
<b>Tested Applications</b>	ELISA, WB; Recommended dilution: WB:1:500-1:2000
<b>Form</b>	Liquid
<b>Conjugate</b>	Non-conjugated
<b>Storage Buffer</b>	Preservative: 0.03% Proclin 300 Constituents: 50% Glycerol, 0.01M PBS, PH 7.4
<b>Purification Method</b>	>95%, Protein G purified
<b>Isotype</b>	IgG
<b>Clonality</b>	Polyclonal
<b>Product Type</b>	Polyclonal Antibody
<b>Immunogen Species</b>	Homo sapiens (Human)
<b>Research Area</b>	Epigenetics and Nuclear Signaling
<b>Target Names</b>	SUZ12

## Image



### Western Blot

Positive WB detected in: COLO205 whole cell lysate(30µg), THP-1 whole cell lysate(30µg), 293 whole cell lysate(30µg), K562 whole cell lysate(30µg), U251 whole cell lysate(30µg)  
 All lanes: SUZ12 antibody at 1:1000  
 Secondary  
 Goat polyclonal to rabbit IgG at 1/40000 dilution  
 Predicted band size: 84 kDa  
 Observed band size: 90 kDa  
 Exposure time: 120s

## Usage

For Research Use Only. Not for use in diagnostic or therapeutic procedures.