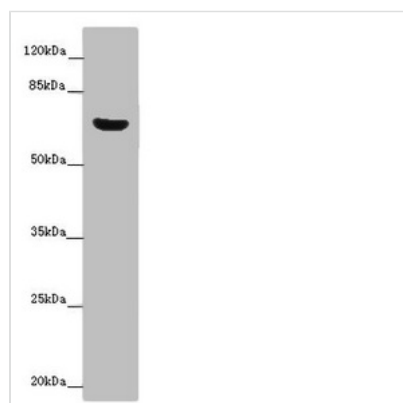




CERKL Antibody

Product Code	CSB-PA669888LA01HU
Storage	Upon receipt, store at -20°C or -80°C. Avoid repeated freeze.
Uniprot No.	Q49MI3
Immunogen	Recombinant Human Ceramide kinase-like protein (1-558AA)
Raised In	Rabbit
Species Reactivity	Human, Mouse
Tested Applications	ELISA, WB, IHC, IF; Recommended dilution: WB:1:1000-1:5000, IHC:1:20-1:200, IF:1:50-1:200
Form	Liquid
Conjugate	Non-conjugated
Storage Buffer	Preservative: 0.03% Proclin 300 Constituents: 50% Glycerol, 0.01M PBS, PH 7.4
Purification Method	>95%, Protein G purified
Isotype	IgG
Clonality	Polyclonal
Alias	Ceramide kinase-like protein, CERKL
Immunogen Species	Homo sapiens (Human)
Research Area	Cell Biology
Target Names	CERKL

Image



Western blot

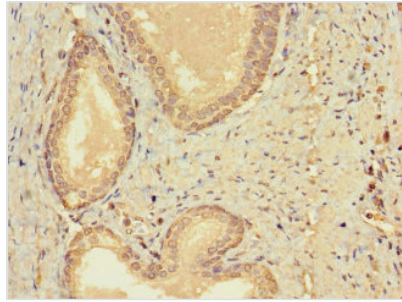
All lanes: CERKL antibody at 14 µg/ml + Mouse lung tissue

Secondary

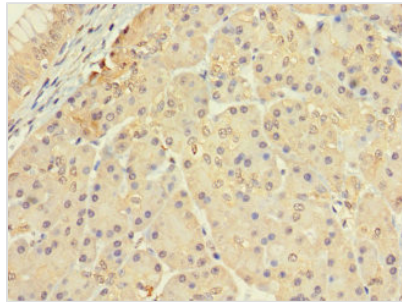
Goat polyclonal to rabbit IgG at 1/10000 dilution

Predicted band size: 63, 60, 53, 48, 43, 25, 20, 58 kDa

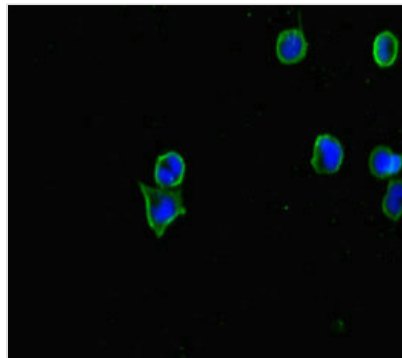
Observed band size: 63 kDa



Immunohistochemistry of paraffin-embedded human prostate cancer using CSB-PA669888LA01HU at dilution of 1:100



Immunohistochemistry of paraffin-embedded human pancreatic tissue using CSB-PA669888LA01HU at dilution of 1:100



Immunofluorescent analysis of MCF-7 cells using CSB-PA669888LA01HU at dilution of 1:100 and Alexa Fluor 488-conjugated AffiniPure Goat Anti-Rabbit IgG(H+L)