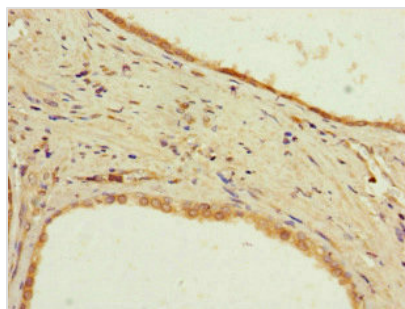




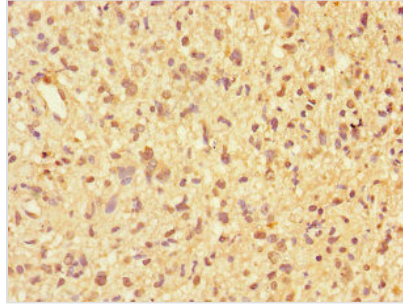
PPP2R2D Antibody

Product Code	CSB-PA727750LA01HU
Storage	Upon receipt, store at -20°C or -80°C. Avoid repeated freeze.
Uniprot No.	Q66LE6
Immunogen	Recombinant Human Serine/threonine-protein phosphatase 2A 55 kDa regulatory subunit B delta isoform protein (1-192AA)
Raised In	Rabbit
Species Reactivity	Human
Tested Applications	ELISA, WB, IHC, IF; Recommended dilution: WB:1:1000-1:5000, IHC:1:20-1:200, IF:1:50-1:200
Form	Liquid
Conjugate	Non-conjugated
Storage Buffer	Preservative: 0.03% Proclin 300 Constituents: 50% Glycerol, 0.01M PBS, PH 7.4
Purification Method	>95%, Protein G purified
Isotype	IgG
Clonality	Polyclonal
Alias	Serine/threonine-protein phosphatase 2A 55 kDa regulatory subunit B delta isoform (PP2A subunit B isoform B55-delta) (PP2A subunit B isoform PR55-delta) (PP2A subunit B isoform R2-delta) (PP2A subunit B isoform delta), PPP2R2D, KIAA1541
Immunogen Species	Homo sapiens (Human)
Research Area	Cell Biology
Target Names	PPP2R2D

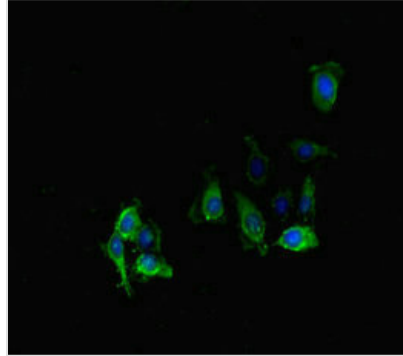
Image



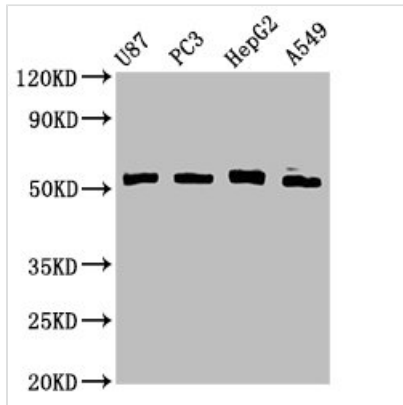
Immunohistochemistry of paraffin-embedded human prostate cancer using CSB-PA727750LA01HU at dilution of 1:100



Immunohistochemistry of paraffin-embedded human glioma using CSB-PA727750LA01HU at dilution of 1:100



Immunofluorescent analysis of HeLa cells using CSB-PA727750LA01HU at dilution of 1:100 and Alexa Fluor 488-conjugated AffiniPure Goat Anti-Rabbit IgG(H+L)



Western Blot
 Positive WB detected in: U87 whole cell lysate, PC-3 whole cell lysate, HepG2 whole cell lysate, A549 whole cell lysate
 All lanes: PPP2R2D antibody at 3.3µg/ml
 Secondary
 Goat polyclonal to rabbit IgG at 1/50000 dilution
 Predicted band size: 53 kDa
 Observed band size: 53 kDa

Usage

For Research Use Only. Not for use in diagnostic or therapeutic procedures.