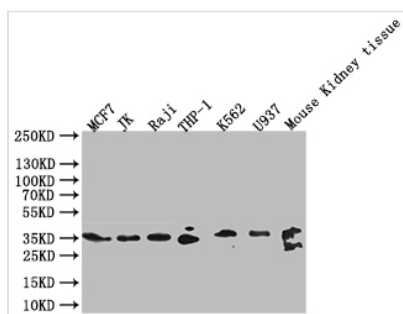




CLEC9A Antibody

Product Code	CSB-PA740922HA01HU
Storage	Upon receipt, store at -20°C or -80°C. Avoid repeated freeze.
Uniprot No.	Q6UXN8
Immunogen	Recombinant Human C-type lectin domain family 9 member A protein (57-241aa)
Raised In	Rabbit
Species Reactivity	Human, Mouse
Tested Applications	ELISA, WB, IF; Recommended dilution: WB:1:1000-1:5000, IF:1:50-1:200
Form	Liquid
Conjugate	Non-conjugated
Storage Buffer	Preservative: 0.03% Proclin 300 Constituents: 50% Glycerol, 0.01M PBS, pH 7.4
Purification Method	>95%, Protein G purified
Isotype	IgG
Clonality	Polyclonal
Product Type	Polyclonal Antibody
Immunogen Species	Homo sapiens (Human)
Research Area	Stem Cells
Target Names	CLEC9A

Image



Western Blot

Positive WB detected in: MCF7 whole cell lysate, JK whole cell lysate, Raji whole cell lysate, THP-1 whole cell lysate, K562 whole cell lysate, U937 whole cell lysate, Mouse Kidney tissue lysate

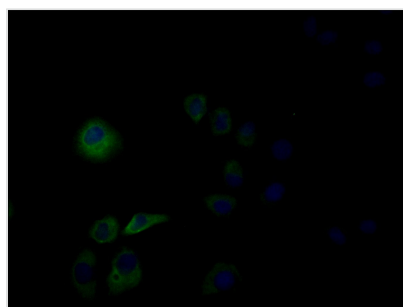
All lanes: CLEC9A antibody at 1:1000

Secondary

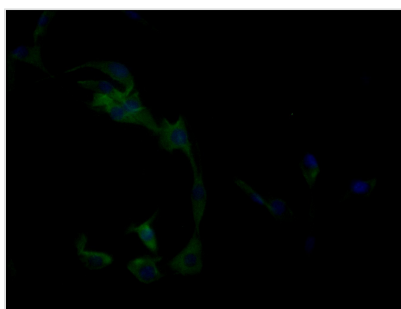
Goat polyclonal to rabbit IgG at 1/40000 dilution

Predicted band size: 27 kDa

Observed band size: 35 kDa



Immunofluorescence staining of HeLa cells with CSB-PA740922HA01HU at 1:50, counter-stained with DAPI. The cells were fixed in 4% formaldehyde, permeabilized using 0.2% Triton X-100 and blocked in 10% normal Goat Serum. The cells were then incubated with the antibody overnight at 4°C. The secondary antibody was Alexa Fluor 488-conjugated AffiniPure Goat Anti-Rabbit IgG(H+L).



Immunofluorescence staining of MCF-7 cells with CSB-PA740922HA01HU at 1:50, counter-stained with DAPI. The cells were fixed in 4% formaldehyde, permeabilized using 0.2% Triton X-100 and blocked in 10% normal Goat Serum. The cells were then incubated with the antibody overnight at 4°C. The secondary antibody was Alexa Fluor 488-conjugated AffiniPure Goat Anti-Rabbit IgG(H+L).