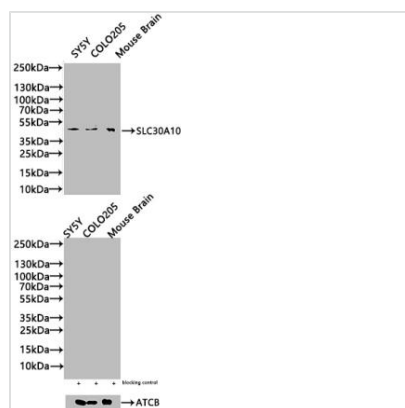




SLC30A10 Antibody

Product Code	CSB-PA747695LA01HU
Storage	Upon receipt, store at -20°C or -80°C. Avoid repeated freeze.
Uniprot No.	Q6XR72
Immunogen	Recombinant Human Zinc transporter 10 protein (58-278AA)
Raised In	Rabbit
Species Reactivity	Human, Mouse
Tested Applications	ELISA, WB, IHC; Recommended dilution: WB:1:500-1:2000,IHC:1:50-1:200
Form	Liquid
Conjugate	Non-conjugated
Storage Buffer	Preservative: 0.03% Proclin 300 Constituents: 50% Glycerol, 0.01M PBS, PH 7.4
Purification Method	>95%, Protein G purified
Isotype	IgG
Clonality	Polyclonal
Product Type	Polyclonal Antibody
Immunogen Species	Homo sapiens (Human)
Research Area	Signal Transduction
Target Names	SLC30A10

Image



Western Blot

Positive WB detected in: SY5Y whole cell lysate(20µg), COLO205 whole cell lysate(20µg), Mouse Brain tissue lysate(20µg)

All lanes: SLC30A10 antibody at 1:1000

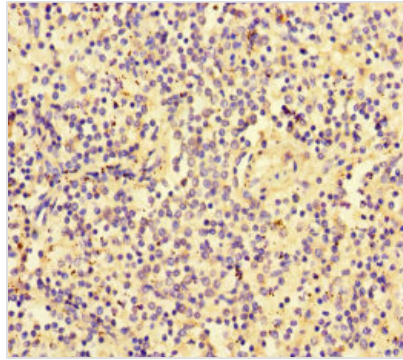
Secondary

Goat polyclonal to rabbit IgG at 1/20000 dilution

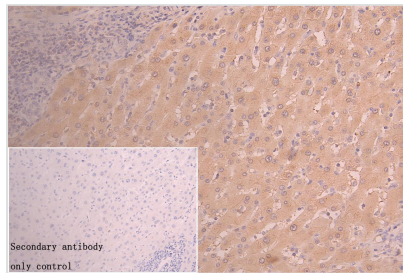
Predicted band size: 53,27,25 kDa

Observed band size: 53 kDa

Exposure time: 120s



IHC image of CSB-PA747695LA01HU diluted at 1:50 and staining in paraffin-embedded human liver tissue performed on a Leica Bond™ system. After dewaxing and hydration, antigen retrieval was mediated by high pressure in a citrate buffer (pH 6.0). Section was blocked with 10% normal goat serum 30min at RT. Then primary antibody (1% BSA) was incubated at 4°C overnight. The primary is detected by a Goat anti-rabbit polymer IgG labeled by HRP and visualized using 0.05% DAB. Secondary antibody only control: uses 1% BSA instead of primary antibody



IHC image of CSB-PA747695LA01HU diluted at 1:50 and staining in paraffin-embedded human liver cancer performed on a Leica Bond™ system. After dewaxing and hydration, antigen retrieval was mediated by high pressure in a citrate buffer (pH 6.0). Section was blocked with 10% normal goat serum 30min at RT. Then primary antibody (1% BSA) was incubated at 4°C overnight. The primary is detected by a Goat anti-rabbit polymer IgG labeled by HRP and visualized using 0.05% DAB. Secondary antibody only control: uses 1% BSA instead of primary antibody

Usage

For Research Use Only. Not for use in diagnostic or therapeutic procedures.