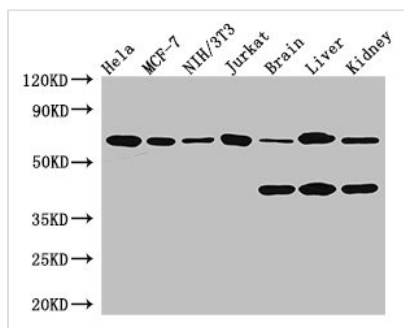




CARM1 Antibody

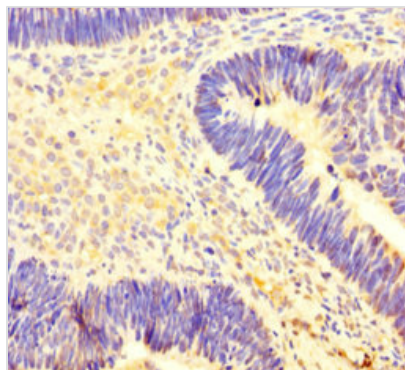
Product Code	CSB-PA771462LA01HU
Storage	Upon receipt, store at -20°C or -80°C. Avoid repeated freeze.
Uniprot No.	Q86X55
Immunogen	Recombinant Human Histone-arginine methyltransferase CARM1 protein (209-379AA)
Raised In	Rabbit
Species Reactivity	Human, Mouse
Tested Applications	ELISA, WB, IHC, IF; Recommended dilution: WB:1:2000-1:5000, IHC:1:20-1:200, IF:1:50-1:200
Form	Liquid
Conjugate	Non-conjugated
Storage Buffer	Preservative: 0.03% Proclin 300 Constituents: 50% Glycerol, 0.01M PBS, PH 7.4
Purification Method	>95%, Protein G purified
Isotype	IgG
Clonality	Polyclonal
Alias	Histone-arginine methyltransferase CARM1 (EC 2.1.1.319) (Coactivator-associated arginine methyltransferase 1) (Protein arginine N-methyltransferase 4), CARM1, PRMT4
Immunogen Species	Homo sapiens (Human)
Research Area	Cell Biology
Target Names	CARM1

Image

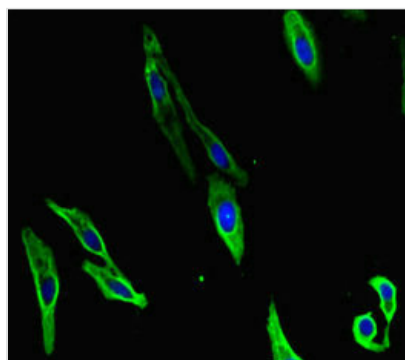


Western Blot

Positive WB detected in: HeLa whole cell lysate, MCF-7 whole cell lysate, NIH/3T3 whole cell lysate, Jurkat whole cell lysate, Mouse brain tissue, Mouse liver tissue, Mouse kidney tissue
 All lanes: CARM1 antibody at 3.4µg/ml
 Secondary
 Goat polyclonal to rabbit IgG at 1/50000 dilution
 Predicted band size: 66, 64, 42 kDa
 Observed band size: 66, 42 kDa



Immunohistochemistry of paraffin-embedded human ovarian cancer using CSB-PA771462LA01HU at dilution of 1:100



Immunofluorescent analysis of HeLa cells using CSB-PA771462LA01HU at dilution of 1:100 and Alexa Fluor 488-conjugated AffiniPure Goat Anti-Rabbit IgG(H+L)

Usage

For Research Use Only. Not for use in diagnostic or therapeutic procedures.