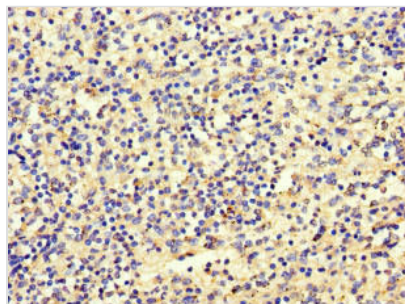




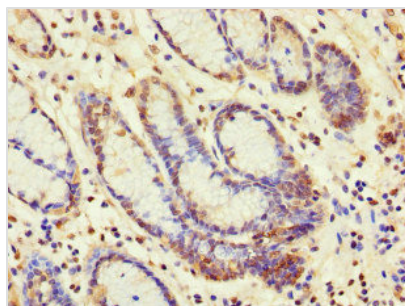
# SBF2 Antibody

|                            |   |
|----------------------------|---|
| <b>Product Code</b>        | CSB-PA773047LA01HU  |
| <b>Storage</b>             | Upon receipt, store at -20°C or -80°C. Avoid repeated freeze.                           |
| <b>Uniprot No.</b>         | Q86WG5  |
| <b>Immunogen</b>           | Recombinant Human Myotubularin-related protein 13 protein (1585-1813AA)                 |
| <b>Raised In</b>           | Rabbit  |
| <b>Species Reactivity</b>  | Human   |
| <b>Tested Applications</b> | ELISA, IHC, IF; Recommended dilution: IHC:1:20-1:200, IF:1:50-1:200                     |
| <b>Form</b>                | Liquid  |
| <b>Conjugate</b>           | Non-conjugated  |
| <b>Storage Buffer</b>      | Preservative: 0.03% Proclin 300<br>Constituents: 50% Glycerol, 0.01M PBS, PH 7.4        |
| <b>Purification Method</b> | >95%, Protein G purified  |
| <b>Isotype</b>             | IgG   |
| <b>Clonality</b>           | Polyclonal  |
| <b>Alias</b>               | Myotubularin-related protein 13 (SET-binding factor 2), SBF2, CMT4B2<br>KIAA1766 MTMR13 |
| <b>Immunogen Species</b>   | Homo sapiens (Human)  |
| <b>Research Area</b>       | Signal Transduction   |
| <b>Target Names</b>        | SBF2  |

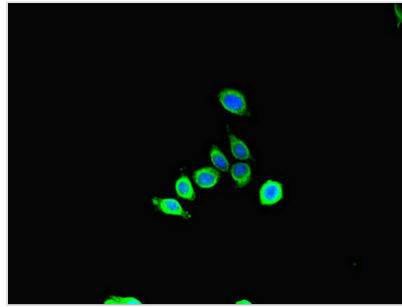
## Image



Immunohistochemistry of paraffin-embedded human spleen tissue using CSB-PA773047LA01HU at dilution of 1:100



Immunohistochemistry of paraffin-embedded human gastric cancer using CSB-PA773047LA01HU at dilution of 1:100



Immunofluorescent analysis of HepG2 cells using CSB-PA773047LA01HU at dilution of 1:100 and Alexa Fluor 488-conjugated AffiniPure Goat Anti-Rabbit IgG(H+L)

---

**Usage**

For Research Use Only. Not for use in diagnostic or therapeutic procedures.