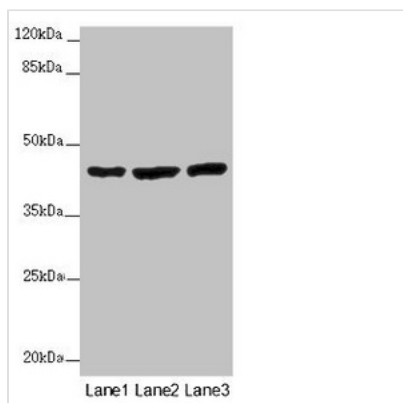




MTERF4 Antibody

Product Code	CSB-PA800224LA01HU
Storage	Upon receipt, store at -20°C or -80°C. Avoid repeated freeze.
Uniprot No.	Q7Z6M4
Immunogen	Recombinant Human Transcription termination factor 4, mitochondrial protein (45-87AA)
Raised In	Rabbit
Species Reactivity	Human, Mouse
Tested Applications	ELISA, WB, IHC, IF; Recommended dilution: WB:1:1000-1:5000, IHC:1:20-1:200, IF:1:50-1:200
Form	Liquid
Conjugate	Non-conjugated
Storage Buffer	Preservative: 0.03% Proclin 300 Constituents: 50% Glycerol, 0.01M PBS, PH 7.4
Purification Method	>95%, Protein G purified
Isotype	IgG
Clonality	Polyclonal
Alias	Transcription termination factor 4, mitochondrial (Mitochondrial transcription termination factor 4) (mTERF domain-containing protein 2) [Cleaved into: mTERF domain-containing protein 2 processed], MTERF4, MTERFD2
Immunogen Species	Homo sapiens (Human)
Research Area	Epigenetics and Nuclear Signaling
Target Names	MTERF4

Image



Western blot

All lanes: MTERF4 antibody at 2 µg/ml

Lane 1: Mouse kidney tissue

Lane 2: HL60 whole cell lysate

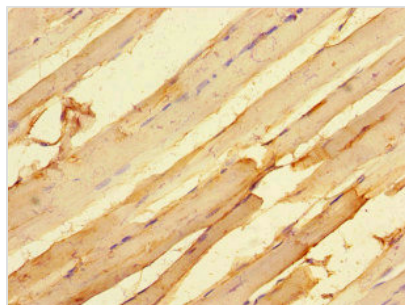
Lane 3: A549 whole cell lysate

Secondary

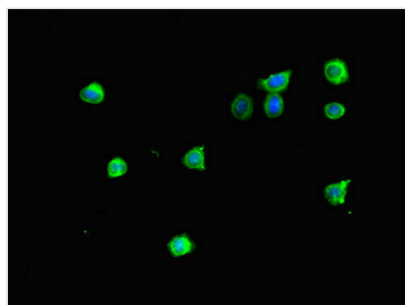
Goat polyclonal to rabbit IgG at 1/10000 dilution

Predicted band size: 44 kDa

Observed band size: 44 kDa



Immunohistochemistry of paraffin-embedded human skeletal muscle tissue using CSB-PA800224LA01HU at dilution of 1:100



Immunofluorescent analysis of HepG2 cells using CSB-PA800224LA01HU at dilution of 1:100 and Alexa Fluor 488-conjugated AffiniPure Goat Anti-Rabbit IgG(H+L)

Usage

For Research Use Only. Not for use in diagnostic or therapeutic procedures.