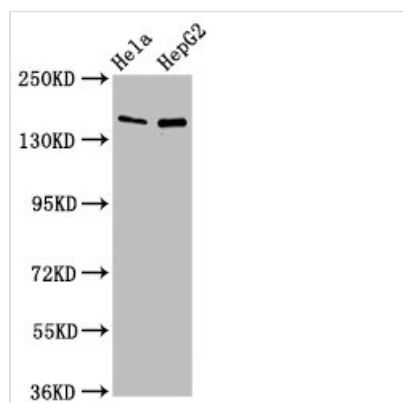




SULF1 Antibody

Product Code	CSB-PA814217LA01HU
Storage	Upon receipt, store at -20°C or -80°C. Avoid repeated freeze.
Uniprot No.	Q8IWU6
Immunogen	Recombinant Human Extracellular sulfatase Sulf-1 protein (105-372AA)
Raised In	Rabbit
Species Reactivity	Human
Tested Applications	ELISA, WB, IHC, IF; Recommended dilution: WB:1:500-1:5000, IHC:1:100-1:500, IF:1:50-1:500
Form	Liquid
Conjugate	Non-conjugated
Storage Buffer	Preservative: 0.03% Proclin 300 Constituents: 50% Glycerol, 0.01M PBS, PH 7.4
Purification Method	>95%, Protein G purified
Isotype	IgG
Clonality	Polyclonal
Alias	Extracellular sulfatase Sulf-1 (hSulf-1) (EC 3.1.6.-), SULF1, KIAA1077
Immunogen Species	Homo sapiens (Human)
Research Area	Signal Transduction
Target Names	SULF1

Image



Western Blot

Positive WB detected in: HeLa whole cell lysate, HepG2 whole cell lysate

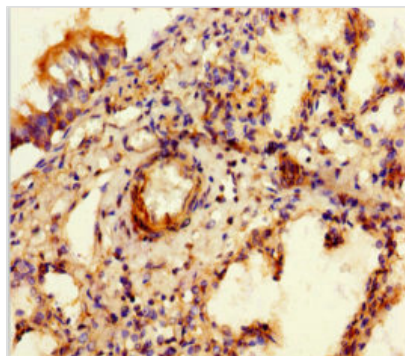
All lanes: SULF1 antibody at 4µg/ml

Secondary

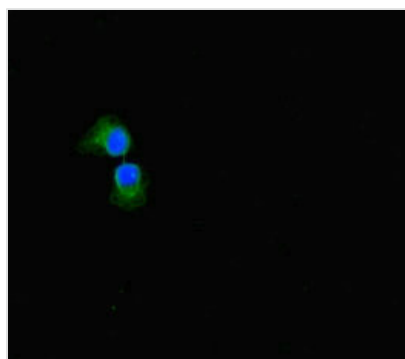
Goat polyclonal to rabbit IgG at 1/50000 dilution

Predicted band size: 102 kDa

Observed band size: 150 kDa



Immunohistochemistry of paraffin-embedded human lung tissue using CSB-PA814217LA01HU at dilution of 1:100



Immunofluorescent analysis of A549 cells using CSB-PA814217LA01HU at dilution of 1:100 and Alexa Fluor 488-conjugated AffiniPure Goat Anti-Rabbit IgG(H+L)

Usage

For Research Use Only. Not for use in diagnostic or therapeutic procedures.