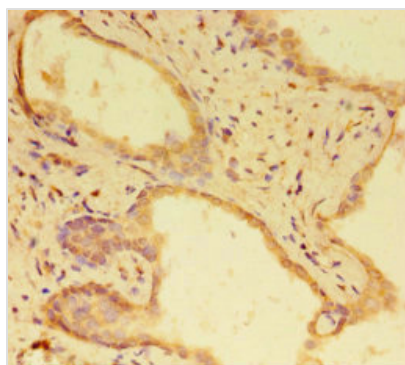




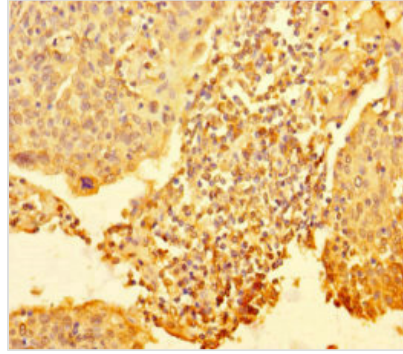
RTF1 Antibody

Product Code	CSB-PA821675HA01HU
Storage	Upon receipt, store at -20°C or -80°C. Avoid repeated freeze.
Uniprot No.	Q92541
Immunogen	Recombinant Human RNA polymerase-associated protein RTF1 homolog protein (620-670AA)
Raised In	Rabbit
Species Reactivity	Human
Tested Applications	ELISA, WB, IHC, IF; Recommended dilution: WB:1:2000-1:5000, IHC:1:20-1:200, IF:1:50-1:200
Form	Liquid
Conjugate	Non-conjugated
Storage Buffer	Preservative: 0.03% Proclin 300 Constituents: 50% Glycerol, 0.01M PBS, PH 7.4
Purification Method	>95%, Protein G purified
Isotype	IgG
Clonality	Polyclonal
Alias	RNA polymerase-associated protein RTF1 homolog, RTF1, KIAA0252
Immunogen Species	Homo sapiens (Human)
Research Area	Epigenetics and Nuclear Signaling
Target Names	RTF1

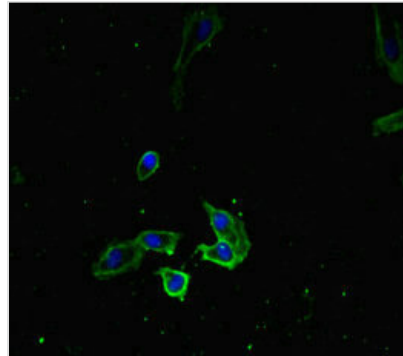
Image



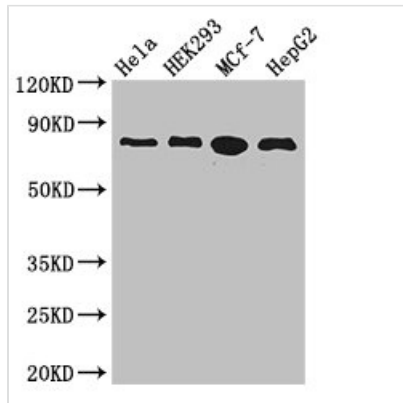
Immunohistochemistry of paraffin-embedded human prostate cancer using CSB-PA821675HA01HU at dilution of 1:100



Immunohistochemistry of paraffin-embedded human cervical cancer using CSB-PA821675HA01HU at dilution of 1:100



Immunofluorescent analysis of HeLa cells using CSB-PA821675HA01HU at dilution of 1:100 and Alexa Fluor 488-conjugated AffiniPure Goat Anti-Rabbit IgG(H+L)



Western Blot

Positive WB detected in: HeLa whole cell lysate, HEK293 whole cell lysate, MCF-7 whole cell lysate, HepG2 whole cell lysate

All lanes: RTF1 antibody at 3.4µg/ml

Secondary

Goat polyclonal to rabbit IgG at 1/50000 dilution

Predicted band size: 81 kDa

Observed band size: 81 kDa

Usage

For Research Use Only. Not for use in diagnostic or therapeutic procedures.